

**RAPORT**

pentru modificarea raportului nr. 147755/22.08.2022 privind modificarea Hotărârii Consiliului Local al municipiului Craiova nr. 253/2022, referitoare la aprobarea organigramei și statului de funcții ale Spitalului Clinic de Boli Infecțioase și Pneumoftiziologie „Victor Babeș” Craiova

Prin raportul nr. 147755/22.08.2022, au fost înaintate spre aprobarea Consiliului Local al municipiului Craiova, organigrama și statul de funcții ale Spitalului Clinic de Boli Infecțioase și Pneumoftiziologie „Victor Babeș” Craiova, în forma anexată la raportul menționat mai sus.

Întrucât, prin adresa nr.12009/23.08.2022, înregistrată la autoritatea locală sub nr.142/23.08.2022, Spitalul Clinic de Boli Infecțioase și Pneumoftiziologie „Victor Babeș” Craiova a comunicat avizul Ministerului Sănătății nr. AR 14906/DPSS 5301/22.08.2022, pentru completarea structurii spitalului cu structura „Laborator de microbiologie medicală”, în conformitate cu prevederile Ordinului nr. 1608/2022 privind modificarea și completarea Ordinului ministrului sănătății publice nr. 1.301/2007 pentru aprobarea Normelor privind funcționarea laboratoarelor de analize medicale, se impune modificarea organigramei și statului de funcții și cu privire la acest aspect.

Având în vedere cele expuse, în conformitate cu prevederile Ordonanței de Urgență nr. 57/2019 privind Codul Administrativ, cu modificările și completările ulterioare, Legii nr. 95/2006, republicată, privind reforma în domeniul sănătății, cu modificările și completările ulterioare, Legii nr. 53/2003, republicată – Codul Muncii, cu modificările și completările ulterioare, Ordinului nr. 1312/250/2020 privind organizarea și funcționarea structurii de management al calității serviciilor de sănătate în cadrul unităților sanitare cu paturi și serviciilor de ambulanță, în procesul de implementare a sistemului de management al calității serviciilor de sănătate și siguranței pacientului, Ordinului nr. 75/2019 pentru aprobarea Criteriilor de performanță privind constituirea, încadrarea și dotarea serviciilor voluntare și a serviciilor private pentru situații de urgență, cu modificările și completările ulterioare, Ordinului nr. 1608/2022 privind modificarea și completarea Ordinului ministrului sănătății publice nr. 1.301/2007 pentru aprobarea Normelor privind funcționarea laboratoarelor de analize medicale și Ordinului nr. 1224/2010 privind aprobarea normativelor de personal pentru asistența medicală spitalicească, precum și pentru modificarea și completarea Ordinului ministrului sănătății publice nr. 1.778/2006 privind aprobarea normativelor de personal, cu modificările și completările ulterioare, vă înaintăm spre aprobare organigrama și statul de funcții în forma modificată, conform anexelor 1 și 2 la prezentul raport.

**ȘEF SERVICIU,**

**CAMELIA NICOLETA FLOREA**

Îmi asum responsabilitatea privind realitatea și legalitatea în solidar cu întocmitorul înscrisului  
Data:

Semnătura:

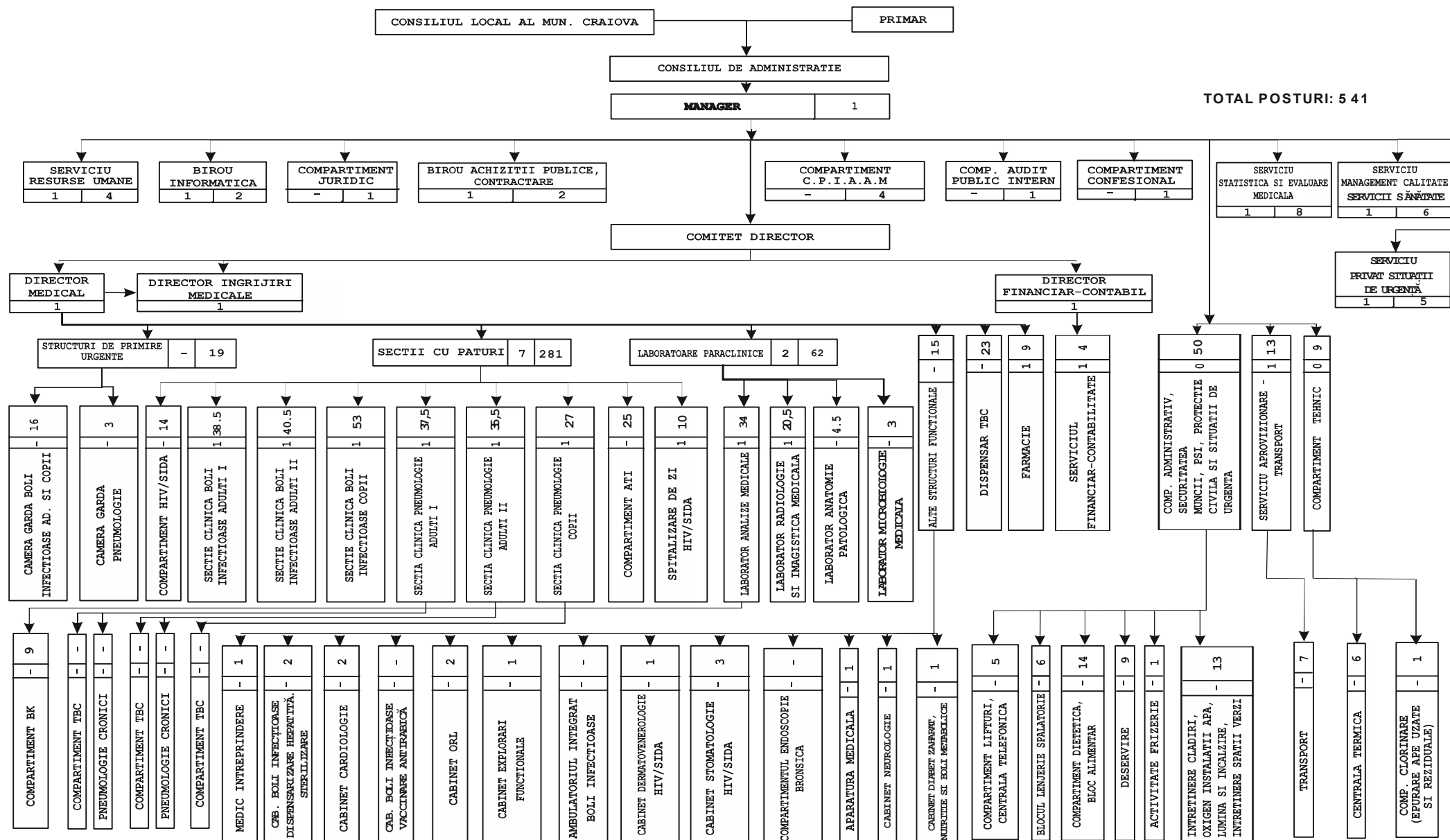
**Întocmit,**

**Cons. GEORGETA-VIORICA GLIGORIJEVIĆ**

Îmi asum responsabilitatea pentru fundamentarea, realitatea și legalitatea întocmirii acestui act oficial  
Data:

Semnătura:

**ORGANIGRAMA SPITALULUI CLINIC DE BOLI INFECȚIOASE  
ȘI PNEUMOFTIZIOLOGIE „VICTOR BABEȘ” CRAIOVA**



**STAT DE FUNCTII**  
**AL SPITALULUI CLINIC DE BOLI INFECȚIOASE ȘI PNEUMOFTOZIOLOGIE "VICTOR BABEȘ" CRAIOVA**

| Nr. Crt.  | FUNCTIA,GRAD SAU TREAPTA    | Nivel studii | Cuquantum post | Grad sau Treapta | Numar posturi aprobate | Numar posturi ocupate | Numar posturi vacante |
|---|-----------------------------|--------------|----------------|------------------|------------------------|-----------------------|-----------------------|
| <b>CONDUCEREA SPITALULUI</b>  |                             |              |                |                  |                        |                       |                       |
| 1,0   | MANAGER                     | S            | 1,0            | II               | 1,0                    | 1,0                   | 0,0                   |
| 2,0   | DIRECTOR MEDICAL            | S            | 1,0            | II               | 1,0                    | 0,0                   | 1,0                   |
| 3,0   | DIRECTOR FIN.CONTABIL       | S            | 1,0            | II               | 1,0                    | 0,0                   | 1,0                   |
| 4,0   | DIRECTOR INGRIJIRI MEDICALE | S            | 1,0            | II               | 1,0                    | 1,0                   | 0,0                   |
| <b>TOTAL CONDUCERE</b>  |                             |              | <b>4,0</b>     |                  | <b>4,0</b>             | <b>2,0</b>            | <b>2,0</b>            |
| <b>COMPARTIMENT PREVENIRE INFECTII ASOCIATE ASISTENTEI MEDICALE</b> |                             |              |                |                  |                        |                       |                       |
| 5,0   | MEDIC                       | S            | 1,0            | PRIMAR           | 1,0                    | 1,0                   | 0,0                   |
| <b>TOTAL PERSONAL SANITAR</b>                                       |                             |              | <b>1,0</b>     |                  | <b>1,0</b>             | <b>1,0</b>            | <b>0,0</b>            |
| 6,0   | ASISTENT MEDICAL            | PL           | 1,0            | PRINCIPAL        | 1,0                    | 1,0                   | 0,0                   |
| 7,0   | ASISTENT MEDICAL            | PL           | 1,0            | PRINCIPAL        | 1,0                    | 1,0                   | 0,0                   |
| <b>TOTAL PERSONAL MEDIU</b>   |                             |              | <b>2,0</b>     |                  | <b>2,0</b>             | <b>2,0</b>            | <b>0,0</b>            |
| 8,0   | AGEN DDD                    | M            | 1,0            |                  | 1,0                    | 1,0                   | 0,0                   |
| <b>TOTAL PERSONAL AUXILIAR</b>                                      |                             |              | <b>1,0</b>     |                  | <b>1,0</b>             | <b>1,0</b>            | <b>0,0</b>            |
| <b>CAMERA DE GARDA BOLI INFECȚIOASE</b>                             |                             |              |                |                  |                        |                       |                       |
| 9,0   | ASISTENT MEDICAL            | PL           | 1,0            | PRINCIPAL        | 1,0                    | 1,0                   | 0,0                   |
| 10,0  | ASISTENT MEDICAL            | S            | 1,0            | PRINCIPAL        | 1,0                    | 1,0                   | 0,0                   |
| 11,0  | ASISTENT MEDICAL            | S            | 1,0            | PRINCIPAL        | 1,0                    | 1,0                   | 0,0                   |
| 12,0  | ASISTENT MEDICAL            | PL           | 1,0            | PRINCIPAL        | 1,0                    | 1,0                   | 0,0                   |
| 13,0  | ASISTENT MEDICAL            | S            | 1,0            | PRINCIPAL        | 1,0                    | 1,0                   | 0,0                   |
| 14,0  | ASISTENT MEDICAL            | S            | 1,0            | PRINCIPAL        | 1,0                    | 1,0                   | 0,0                   |
| 15,0  | ASISTENT MEDICAL            | PL           | 1,0            | PRINCIPAL        | 1,0                    | 1,0                   | 0,0                   |
| 16,0  | ASISTENT MEDICAL            | S            | 1,0            | PRINCIPAL        | 1,0                    | 1,0                   | 0,0                   |
| 17,0  | ASISTENT MEDICAL            | PL           | 1,0            | PRINCIPAL        | 1,0                    | 0,0                   | 1,0                   |
| <b>TOTAL ASISTENTE 3 TURE CAMERA DE GARDA</b>                       |                             |              | <b>9,0</b>     |                  | <b>9,0</b>             | <b>8,0</b>            | <b>1,0</b>            |
| 18,0  | INFIRMIERA                  | M            | 1,0            |                  | 1,0                    | 1,0                   | 0,0                   |
| 19,0  | INFIRMIERA                  | M            | 1,0            |                  | 1,0                    | 1,0                   | 0,0                   |
| 20,0  | INFIRMIERA                  | M            | 1,0            |                  | 1,0                    | 1,0                   | 0,0                   |
| 21,0  | INFIRMIERA                  | M            | 1,0            |                  | 1,0                    | 1,0                   | 0,0                   |
| 22,0  | INFIRMIERA                  | G            | 1,0            |                  | 1,0                    | 0,0                   | 1,0                   |
| <b>TOTAL INFIRMIERE CAMERA DE GARDA</b>                             |                             |              | <b>5,0</b>     |                  | <b>5,0</b>             | <b>4,0</b>            | <b>1,0</b>            |
| 23,0  | INGRIJITOARE                | G            | 1,0            |                  | 1,0                    | 1,0                   | 0,0                   |
| 24,0  | INGRIJITOARE                | G            | 1,0            |                  | 1,0                    | 1,0                   | 0,0                   |
| <b>TOTAL INGRIJITOARE CAMERA DE GARDA</b>                           |                             |              | <b>2,0</b>     |                  | <b>2,0</b>             | <b>2,0</b>            | <b>0,0</b>            |
| <b>CAMERA GARDA PNEUMOLOGIE</b>                                     |                             |              |                |                  |                        |                       |                       |
| 25,0  | ASISTENT MEDICAL            | PL           | 1,0            | PRINCIPAL        | 1,0                    | 1,0                   | 0,0                   |
| 26,0  | ASISTENT MEDICAL            | PL           | 1,0            | PRINCIPAL        | 1,0                    | 1,0                   | 0,0                   |
| 27,0  | ASISTENT MEDICAL            | PL           | 1,0            | GENERALIST       | 1,0                    | 0,0                   | 1,0                   |
| <b>TOTAL PERS.SANITAR MEDIU</b>                                     |                             |              | <b>3,0</b>     |                  | <b>3,0</b>             | <b>2,0</b>            | <b>1,0</b>            |
| <b>SECTIA CLINICA DE BOLI INFECȚIOASE ADULTI I - 65PATURI</b>       |                             |              |                |                  |                        |                       |                       |
| 28,0  | MEDIC SEF SECTIE            | S            | 1,0            | II               | 1,0                    | 0,0                   | 1,0                   |
| 29,0  | MEDIC                       | S            | 1,0            | PRIMAR           | 1,0                    | 1,0                   | 0,0                   |
| 30,0  | MEDIC                       | S            | 1,0            | SPECIALIST       | 1,0                    | 1,0                   | 0,0                   |
| 30,5  | MEDIC - As. Univ.           | S            | 0,5            | PRIMAR           | 0,5                    | 0,5                   | 0,0                   |
| 31,5  | MEDIC                       | S            | 1,0            | PRIMAR           | 1,0                    | 1,0                   | 0,0                   |
| 32,5  | MEDIC                       | S            | 1,0            | PRIMAR           | 1,0                    | 1,0                   | 0,0                   |
| <b>TOTAL MEDICI</b>   |                             |              | <b>5,5</b>     |                  | <b>5,5</b>             | <b>4,5</b>            | <b>1,0</b>            |
| 33,5  | ASISTENT MEDICAL SEF        | S            | 1,0            | PRINCIPAL        | 1,0                    | 1,0                   | 0,0                   |
| 34,5  | ASISTENT MEDICAL            | PL           | 1,0            | PRINCIPAL        | 1,0                    | 1,0                   | 0,0                   |
| 35,5  | ASISTENT MEDICAL            | PL           | 1,0            | PRINCIPAL        | 1,0                    | 1,0                   | 0,0                   |
| 36,5  | ASISTENT MEDICAL            | S            | 1,0            | PRINCIPAL        | 1,0                    | 1,0                   | 0,0                   |
| 37,5  | ASISTENT MEDICAL            | PL           | 1,0            | PRINCIPAL        | 1,0                    | 1,0                   | 0,0                   |
| 38,5  | ASISTENT MEDICAL            | S            | 1,0            | PRINCIPAL        | 1,0                    | 0,0                   | 1,0                   |
| 39,5  | ASISTENT MEDICAL            | S            | 1,0            | PRINCIPAL        | 1,0                    | 1,0                   | 0,0                   |
| 40,5  | ASISTENT MEDICAL            | PL           | 1,0            | PRINCIPAL        | 1,0                    | 1,0                   | 0,0                   |
| 41,5  | ASISTENT MEDICAL            | PL           | 1,0            | PRINCIPAL        | 1,0                    | 1,0                   | 0,0                   |
| 42,5  | ASISTENT MEDICAL            | PL           | 1,0            | PRINCIPAL        | 1,0                    | 1,0                   | 0,0                   |
| 43,5  | ASISTENT MEDICAL            | S            | 1,0            | PRINCIPAL        | 1,0                    | 1,0                   | 0,0                   |
| 44,5  | ASISTENT MEDICAL            | PL           | 1,0            | PRINCIPAL        | 1,0                    | 1,0                   | 0,0                   |
| 45,5  | ASISTENT MEDICAL            | S            | 1,0            | GENERALIST       | 1,0                    | 0,0                   | 1,0                   |
| 46,5  | ASISTENT MEDICAL            | S            | 1,0            | PRINCIPAL        | 1,0                    | 1,0                   | 0,0                   |
| 47,5  | ASISTENT MEDICAL            | PL           | 1,0            | PRINCIPAL        | 1,0                    | 1,0                   | 0,0                   |
| 48,5  | ASISTENT MEDICAL            | PL           | 1,0            | PRINCIPAL        | 1,0                    | 1,0                   | 0,0                   |
| 49,5  | ASISTENT MEDICAL            | PL           | 1,0            | PRINCIPAL        | 1,0                    | 1,0                   | 0,0                   |
| 50,5  | ASISTENT MEDICAL            | PL           | 1,0            | PRINCIPAL        | 1,0                    | 1,0                   | 0,0                   |

| Nr. Crt.   | FUNCTIA,GRAD SAU TREAPTA | Nivel studii | Cuquantum post | Grad sau Treapta | Numar posturi aprobate | Numar posturi ocupate | Numar posturi vacante |
|--|--------------------------|--------------|----------------|------------------|------------------------|-----------------------|-----------------------|
| 51,5   | ASISTENT MEDICAL         | PL           | 1,0            | PRINCIPAL        | 1,0                    | 1,0                   | 0,0                   |
| <b>TOTAL PERS.MEDIU TREI TURE</b>                            |                          |              | <b>19,0</b>    |                  | <b>19,0</b>            | <b>17,0</b>           | <b>2,0</b>            |
| 52,5   | REGISTRATOR MEDICAL      | M            | 1,0            | DEBUTANT         | 1,0                    | 0,0                   | 1,0                   |
| <b>TOTAL PERS.MEDIU POST FIX</b>                             |                          |              | <b>1,0</b>     |                  | <b>1,0</b>             | <b>0,0</b>            | <b>1,0</b>            |
| 53,5   | INFIRMIERA               | G            | 1,0            |                  | 1,0                    | 1,0                   | 0,0                   |
| 54,5   | INFIRMIERA               | G            | 1,0            |                  | 1,0                    | 1,0                   | 0,0                   |
| 55,5   | INFIRMIERA               | M            | 1,0            |                  | 1,0                    | 1,0                   | 0,0                   |
| 56,5   | INFIRMIERA               | G            | 1,0            |                  | 1,0                    | 0,0                   | 1,0                   |
| 57,5   | INFIRMIERA               | G            | 1,0            |                  | 1,0                    | 1,0                   | 0,0                   |
| 58,5   | INFIRMIERA               | G            | 1,0            |                  | 1,0                    | 1,0                   | 0,0                   |
| 59,5   | INFIRMIERA               | G            | 1,0            |                  | 1,0                    | 1,0                   | 0,0                   |
| 60,5   | INFIRMIERA               | M            | 1,0            |                  | 1,0                    | 1,0                   | 0,0                   |
| 61,5   | INFIRMIERA               | G            | 1,0            |                  | 1,0                    | 1,0                   | 0,0                   |
| 62,5   | INFIRMIERA               | G            | 1,0            |                  | 1,0                    | 1,0                   | 0,0                   |
| 63,5   | INFIRMIERA               | M            | 1,0            |                  | 1,0                    | 1,0                   | 0,0                   |
| 64,5   | INFIRMIERA               | M            | 1,0            |                  | 1,0                    | 1,0                   | 0,0                   |
| 65,5   | INFIRMIERA               | M            | 1,0            |                  | 1,0                    | 1,0                   | 0,0                   |
| <b>TOTAL INFIRMIERE</b>                                      |                          |              | <b>13,0</b>    |                  | <b>13,0</b>            | <b>12,0</b>           | <b>1,0</b>            |
| 66,5   | INGRIJITOARE             | G            | 1,0            |                  | 1,0                    | 1,0                   | 0,0                   |
| <b>TOTAL INGRIJITOARE</b>                                    |                          |              | <b>1,0</b>     |                  | <b>1,0</b>             | <b>1,0</b>            | <b>0,0</b>            |
| <b>COMPARTIMENT HIV/SIDA 15 PATURI</b>                       |                          |              |                |                  |                        |                       |                       |
| 67,5   | MEDIC                    | S            | 1,0            | SPECIALIST       | 1,0                    | 1,0                   | 0,0                   |
| <b>TOTAL MEDICI</b>  |                          |              | <b>1,0</b>     |                  | <b>1,0</b>             | <b>1,0</b>            | <b>0,0</b>            |
| 68,5   | ASISTENT MEDICAL         | S            | 1,0            | PRINCIPAL        | 1,0                    | 1,0                   | 0,0                   |
| 69,5   | ASISTENT MEDICAL         | PL           | 1,0            | PRINCIPAL        | 1,0                    | 1,0                   | 0,0                   |
| 70,5   | ASISTENT MEDICAL         | S            | 1,0            | PRINCIPAL        | 1,0                    | 1,0                   | 0,0                   |
| 71,5   | ASISTENT MEDICAL         | S            | 1,0            | PRINCIPAL        | 1,0                    | 1,0                   | 0,0                   |
| 72,5   | ASISTENT MEDICAL         | S            | 1,0            | PRINCIPAL        | 1,0                    | 1,0                   | 0,0                   |
| 73,5   | ASISTENT MEDICAL         | S            | 1,0            | PRINCIPAL        | 1,0                    | 1,0                   | 0,0                   |
| 74,5   | ASISTENT MEDICAL         | S            | 1,0            | PRINCIPAL        | 1,0                    | 1,0                   | 0,0                   |
| <b>TOTAL PERSONAL 3 TURE</b>                                 |                          |              | <b>7,0</b>     |                  | <b>7,0</b>             | <b>7,0</b>            | <b>0,0</b>            |
| 75,5   | INFIRMIERA               | G            | 1,0            |                  | 1,0                    | 1,0                   | 0,0                   |
| 76,5   | INFIRMIERA               | G            | 1,0            |                  | 1,0                    | 1,0                   | 0,0                   |
| 77,5   | INFIRMIERA               | G            | 1,0            |                  | 1,0                    | 1,0                   | 0,0                   |
| 78,5   | INFIRMIERA               | G            | 1,0            |                  | 1,0                    | 1,0                   | 0,0                   |
| 79,5   | INFIRMIERA               | G            | 1,0            |                  | 1,0                    | 1,0                   | 0,0                   |
| 80,5   | INFIRMIERA               | G            | 1,0            |                  | 1,0                    | 1,0                   | 0,0                   |
| <b>TOTAL INFIRMIERE</b>                                      |                          |              | <b>6,0</b>     |                  | <b>6,0</b>             | <b>6,0</b>            | <b>0,0</b>            |
| <b>SECTIA CLINICA BOLI INFECTIOASE ADULTI II - 65 PATURI</b> |                          |              |                |                  |                        |                       |                       |
| 81,5   | MEDIC SEF SECTIE         | S            | 1,0            | II               | 1,0                    | 1,0                   | 0,0                   |
| 82,5   | MEDIC                    | S            | 1,0            | SPECIALIST       | 1,0                    | 1,0                   | 0,0                   |
| 83,5   | MEDIC                    | S            | 1,0            | PRIMAR           | 1,0                    | 1,0                   | 0,0                   |
| 84,5   | MEDIC                    | S            | 1,0            | PRIMAR           | 1,0                    | 1,0                   | 0,0                   |
| 85,5   | MEDIC                    | S            | 1,0            | PRIMAR           | 1,0                    | 1,0                   | 0,0                   |
| 86,0   | MEDIC - Sef lucr.        | S            | 0,5            | PRIMAR           | 0,5                    | 0,5                   | 0,0                   |
| <b>TOTAL MEDICI</b>  |                          |              | <b>5,5</b>     |                  | <b>5,5</b>             | <b>5,5</b>            | <b>0,0</b>            |
| 87,0   | ASISTENT MEDICAL SEF     | PL           | 1,0            | PRINCIPAL        | 1,0                    | 1,0                   | 0,0                   |
| 88,0   | ASISTENT MEDICAL         | PL           | 1,0            | PRINCIPAL        | 1,0                    | 0,0                   | 1,0                   |
| 89,0   | ASISTENT MEDICAL         | PL           | 1,0            | PRINCIPAL        | 1,0                    | 1,0                   | 0,0                   |
| 90,0   | ASISTENT MEDICAL         | PL           | 1,0            | PRINCIPAL        | 1,0                    | 1,0                   | 0,0                   |
| 91,0   | ASISTENT MEDICAL         | PL           | 1,0            | PRINCIPAL        | 1,0                    | 1,0                   | 0,0                   |
| 92,0   | ASISTENT MEDICAL         | S            | 1,0            | PRINCIPAL        | 1,0                    | 1,0                   | 0,0                   |
| 93,0   | ASISTENT MEDICAL         | PL           | 1,0            | GENERALIST       | 1,0                    | 1,0                   | 0,0                   |
| 94,0   | ASISTENT MEDICAL         | PL           | 1,0            | PRINCIPAL        | 1,0                    | 1,0                   | 0,0                   |
| 95,0   | ASISTENT MEDICAL         | S            | 1,0            | PRINCIPAL        | 1,0                    | 1,0                   | 0,0                   |
| 96,0   | ASISTENT MEDICAL         | S            | 1,0            | PRINCIPAL        | 1,0                    | 1,0                   | 0,0                   |
| 97,0   | ASISTENT MEDICAL         | S            | 1,0            | GENERALIST       | 1,0                    | 1,0                   | 0,0                   |
| 98,0   | ASISTENT MEDICAL         | S            | 1,0            | PRINCIPAL        | 1,0                    | 1,0                   | 0,0                   |
| 99,0   | ASISTENT MEDICAL         | S            | 1,0            | PRINCIPAL        | 1,0                    | 1,0                   | 0,0                   |
| 100,0  | ASISTENT MEDICAL         | PL           | 1,0            | GENERALIST       | 1,0                    | 1,0                   | 0,0                   |
| 101,0  | ASISTENT MEDICAL         | S            | 1,0            | PRINCIPAL        | 1,0                    | 1,0                   | 0,0                   |
| 102,0  | ASISTENT MEDICAL         | S            | 1,0            | GENERALIST       | 1,0                    | 1,0                   | 0,0                   |
| 103,0  | ASISTENT MEDICAL         | S            | 1,0            | PRINCIPAL        | 1,0                    | 1,0                   | 0,0                   |
| 104,0  | ASISTENT MEDICAL         | PL           | 1,0            | GENERALIST       | 1,0                    | 1,0                   | 0,0                   |
| 105,0  | ASISTENT MEDICAL         | PL           | 1,0            | GENERALIST       | 1,0                    | 1,0                   | 0,0                   |
| 106,0  | ASISTENT MEDICAL         | S            | 1,0            | GENERALIST       | 1,0                    | 0,0                   | 1,0                   |
| 107,0  | ASISTENT MEDICAL         | S            | 1,0            | PRINCIPAL        | 1,0                    | 0,0                   | 1,0                   |
| <b>TOTAL ASISTENTE 3 TURE</b>                                |                          |              | <b>21,0</b>    |                  | <b>21,0</b>            | <b>18,0</b>           | <b>3,0</b>            |
| 108,0  | REGISTRATOR MEDICAL      | M            | 1,0            | DEBUTANT         | 1,0                    | 0,0                   | 1,0                   |
| <b>TOTAL PERS.MEDIU POST FIX</b>                             |                          |              | <b>1,0</b>     |                  | <b>1,0</b>             | <b>0,0</b>            | <b>1,0</b>            |

| Nr. Crt.   | FUNCTIA,GRAD SAU TREAPTA | Nivel studii | Quantum post | Grad sau Treapta | Numar posturi aprobate | Numar posturi ocupate | Numar posturi vacante |
|--|--------------------------|--------------|--------------|------------------|------------------------|-----------------------|-----------------------|
| 109,0  | INFIRMIERA               | G            | 1,0          |                  | 1,0                    | 1,0                   | 0,0                   |
| 110,0  | INFIRMIERA               | M            | 1,0          |                  | 1,0                    | 0,0                   | 1,0                   |
| 111,0  | INFIRMIERA               | G            | 1,0          |                  | 1,0                    | 1,0                   | 0,0                   |
| 112,0  | INFIRMIERA               | G            | 1,0          |                  | 1,0                    | 0,0                   | 1,0                   |
| 113,0  | INFIRMIERA               | G            | 1,0          |                  | 1,0                    | 1,0                   | 0,0                   |
| 114,0  | INFIRMIERA               | G            | 1,0          |                  | 1,0                    | 1,0                   | 0,0                   |
| 115,0  | INFIRMIERA               | M            | 1,0          |                  | 1,0                    | 1,0                   | 0,0                   |
| 116,0  | INFIRMIERA               | M            | 1,0          |                  | 1,0                    | 1,0                   | 0,0                   |
| 117,0  | INFIRMIERA               | G            | 1,0          |                  | 1,0                    | 1,0                   | 0,0                   |
| 118,0  | INFIRMIERA               | G            | 1,0          |                  | 1,0                    | 1,0                   | 0,0                   |
| 119,0  | INFIRMIERA               | G            | 1,0          |                  | 1,0                    | 1,0                   | 0,0                   |
| 120,0  | INFIRMIERA               | G            | 1,0          |                  | 1,0                    | 1,0                   | 0,0                   |
| <b>TOTAL INFIRMIERE</b>                                  |                          |              | <b>12,0</b>  |                  | <b>12,0</b>            | <b>10,0</b>           | <b>2,0</b>            |
| 121,0  | INGRIJITOARE             | G            | 1,0          |                  | 1,0                    | 1,0                   | 0,0                   |
| 122,0  | INGRIJITOARE             | G            | 1,0          |                  | 1,0                    | 1,0                   | 0,0                   |
| <b>TOTAL INGRIJITOARE</b>                                |                          |              | <b>2,0</b>   |                  | <b>2,0</b>             | <b>2,0</b>            | <b>0,0</b>            |
| <b>SECTIA CLINICA BOLI INFECTIOASE COPII - 60 PATURI</b> |                          |              |              |                  |                        |                       |                       |
| 123,0  | MEDIC SEF SECTIE         | S            | 1,0          | II               | 1,0                    | 0,0                   | 1,0                   |
| 124,0  | MEDIC                    | S            | 1,0          | SPECIALIST       | 1,0                    | 1,0                   | 0,0                   |
| 125,0  | MEDIC                    | S            | 1,0          | SPECIALIST       | 1,0                    | 1,0                   | 0,0                   |
| 126,0  | MEDIC                    | S            | 1,0          | PRIMAR           | 1,0                    | 1,0                   | 0,0                   |
| 127,0  | MEDIC                    | S            | 1,0          | SPECIALIST       | 1,0                    | 1,0                   | 0,0                   |
| 128,0  | MEDIC                    | S            | 1,0          | PRIMAR           | 1,0                    | 1,0                   | 0,0                   |
| <b>TOTAL MEDICI</b>                                      |                          |              | <b>6,0</b>   |                  | <b>6,0</b>             | <b>5,0</b>            | <b>1,0</b>            |
| 129,0  | ASISTENT MEDICAL SEF     | SSD          | 1,0          | PRINCIPAL        | 1,0                    | 1,0                   | 0,0                   |
| 130,0  | ASISTENT MEDICAL         | PL           | 1,0          | PRINCIPAL        | 1,0                    | 1,0                   | 0,0                   |
| 131,0  | ASISTENT MEDICAL         | PL           | 1,0          | PRINCIPAL        | 1,0                    | 1,0                   | 0,0                   |
| 132,0  | ASISTENT MEDICAL         | S            | 1,0          | PRINCIPAL        | 1,0                    | 1,0                   | 0,0                   |
| 133,0  | ASISTENT MEDICAL         | S            | 1,0          | PRINCIPAL        | 1,0                    | 1,0                   | 0,0                   |
| 134,0  | ASISTENT MEDICAL         | PL           | 1,0          | PRINCIPAL        | 1,0                    | 1,0                   | 0,0                   |
| 135,0  | ASISTENT MEDICAL         | PL           | 1,0          | PRINCIPAL        | 1,0                    | 1,0                   | 0,0                   |
| 136,0  | ASISTENT MEDICAL         | PL           | 1,0          | PRINCIPAL        | 1,0                    | 1,0                   | 0,0                   |
| 137,0  | ASISTENT MEDICAL         | S            | 1,0          | GENERALIST       | 1,0                    | 0,0                   | 1,0                   |
| 138,0  | ASISTENT MEDICAL         | PL           | 1,0          | PRINCIPAL        | 1,0                    | 1,0                   | 0,0                   |
| 139,0  | ASISTENT MEDICAL         | S            | 1,0          | PRINCIPAL        | 1,0                    | 0,0                   | 1,0                   |
| 140,0  | ASISTENT MEDICAL         | S            | 1,0          | PRINCIPAL        | 1,0                    | 0,0                   | 1,0                   |
| 141,0  | ASISTENT MEDICAL         | PL           | 1,0          | PRINCIPAL        | 1,0                    | 1,0                   | 0,0                   |
| 142,0  | ASISTENT MEDICAL         | PL           | 1,0          | PRINCIPAL        | 1,0                    | 1,0                   | 0,0                   |
| 143,0  | ASISTENT MEDICAL         | PL           | 1,0          | PRINCIPAL        | 1,0                    | 1,0                   | 0,0                   |
| 144,0  | ASISTENT MEDICAL         | PL           | 1,0          | PRINCIPAL        | 1,0                    | 1,0                   | 0,0                   |
| 145,0  | ASISTENT MEDICAL         | PL           | 1,0          | PRINCIPAL        | 1,0                    | 1,0                   | 0,0                   |
| 146,0  | ASISTENT MEDICAL         | PL           | 1,0          | PRINCIPAL        | 1,0                    | 1,0                   | 0,0                   |
| 147,0  | ASISTENT MEDICAL         | PL           | 1,0          | PRINCIPAL        | 1,0                    | 1,0                   | 0,0                   |
| 148,0  | ASISTENT MEDICAL         | S            | 1,0          | PRINCIPAL        | 1,0                    | 1,0                   | 0,0                   |
| 149,0  | ASISTENT MEDICAL         | PL           | 1,0          | PRINCIPAL        | 1,0                    | 1,0                   | 0,0                   |
| <b>TOTAL PERS.MED.TREI TURE</b>                          |                          |              | <b>21,0</b>  |                  | <b>21,0</b>            | <b>18,0</b>           | <b>3,0</b>            |
| 150,0  | ASISTENT MEDICAL         | S            | 1,0          | PRINCIPAL        | 1,0                    | 0,0                   | 1,0                   |
| 151,0  | ASISTENT MEDICAL         | PL           | 1,0          | PRINCIPAL        | 1,0                    | 1,0                   | 0,0                   |
| 152,0  | ASISTENT MEDICAL         | PL           | 1,0          | PRINCIPAL        | 1,0                    | 0,0                   | 1,0                   |
| <b>TOTAL PERS.MEDIU BIBERONERIE</b>                      |                          |              | <b>3,0</b>   |                  | <b>3,0</b>             | <b>1,0</b>            | <b>2,0</b>            |
| 153,0  | REGISTRATOR MEDICAL      | M            | 1,0          |                  | 1,0                    | 0,0                   | 1,0                   |
| <b>TOTAL PERS.MEDIU POST FIX</b>                         |                          |              | <b>1,0</b>   |                  | <b>1,0</b>             | <b>0,0</b>            | <b>1,0</b>            |
| 154,0  | INFIRMIERA               | M            | 1,0          |                  | 1,0                    | 1,0                   | 0,0                   |
| 155,0  | INFIRMIERA               | G            | 1,0          |                  | 1,0                    | 1,0                   | 0,0                   |
| 156,0  | INFIRMIERA               | G            | 1,0          |                  | 1,0                    | 1,0                   | 0,0                   |
| 157,0  | INFIRMIERA               | M            | 1,0          |                  | 1,0                    | 1,0                   | 0,0                   |
| 158,0  | INFIRMIERA               | G            | 1,0          |                  | 1,0                    | 1,0                   | 0,0                   |
| 159,0  | INFIRMIERA               | G            | 1,0          |                  | 1,0                    | 1,0                   | 0,0                   |
| 160,0  | INFIRMIERA               | G            | 1,0          |                  | 1,0                    | 1,0                   | 0,0                   |
| 161,0  | INFIRMIERA               | G            | 1,0          |                  | 1,0                    | 1,0                   | 0,0                   |
| 162,0  | INFIRMIERA               | M            | 1,0          |                  | 1,0                    | 1,0                   | 0,0                   |
| 163,0  | INFIRMIERA               | G            | 1,0          |                  | 1,0                    | 1,0                   | 0,0                   |
| 164,0  | INFIRMIERA               | G            | 1,0          |                  | 1,0                    | 1,0                   | 0,0                   |
| 165,0  | INFIRMIERA               | G            | 1,0          |                  | 1,0                    | 1,0                   | 0,0                   |
| 166,0  | INFIRMIERA               | M            | 1,0          |                  | 1,0                    | 1,0                   | 0,0                   |
| 167,0  | INFIRMIERA               | M            | 1,0          |                  | 1,0                    | 1,0                   | 0,0                   |
| 168,0  | INFIRMIERA               | M            | 1,0          |                  | 1,0                    | 1,0                   | 0,0                   |
| 169,0  | INFIRMIERA               | G            | 1,0          |                  | 1,0                    | 1,0                   | 0,0                   |
| 170,0  | INFIRMIERA               | G            | 1,0          |                  | 1,0                    | 1,0                   | 0,0                   |
| <b>TOTAL INFIRMIERE</b>                                  |                          |              | <b>17,0</b>  |                  | <b>17,0</b>            | <b>17,0</b>           | <b>0,0</b>            |
| 171,0  | INGRIJITOARE             | G            | 1,0          |                  | 1,0                    | 1,0                   | 0,0                   |
| 172,0  | INGRIJITOARE             | G            | 1,0          |                  | 1,0                    | 1,0                   | 0,0                   |

| Nr. Crt.   | FUNCTIA,GRAD SAU TREAPTA | Nivel studii | Quantum post | Grad sau Treapta | Numar posturi aprobate | Numar posturi ocupate | Numar posturi vacante |
|--|--------------------------|--------------|--------------|------------------|------------------------|-----------------------|-----------------------|
| 173.0  | INGRIJITOARE             | G            | 1,0          |                  | 1,0                    | 1,0                   | 0,0                   |
| 174.0  | INGRIJITOARE             | G            | 1,0          |                  | 1,0                    | 1,0                   | 0,0                   |
| 175.0  | INGRIJITOARE             | G            | 1,0          |                  | 1,0                    | 1,0                   | 0,0                   |
| 176.0  | INGRIJITOARE             | G            | 1,0          |                  | 1,0                    | 1,0                   | 0,0                   |
| <b>TOTAL INGRIJITOARE</b>  |                          |              | <b>6,0</b>   |                  | <b>6,0</b>             | <b>6,0</b>            | <b>0,0</b>            |
| <b>AMBULATORIU INTEGRAT BOLI INFECTIOASE</b>   |                          |              |              |                  |                        |                       |                       |
| Activitatea este asigurata de personalul unitatii  |                          |              |              |                  |                        |                       |                       |
| <b>COMPARTIMENT ATI - 10 PATURI</b>  |                          |              |              |                  |                        |                       |                       |
| 177.0  | MEDIC                    | S            | 1,0          | SPECIALIST       | 1,0                    | 1,0                   | 0,0                   |
| 178.0  | MEDIC                    | S            | 1,0          | SPECIALIST       | 1,0                    | 1,0                   | 0,0                   |
| 179.0  | MEDIC                    | S            | 1,0          | SPECIALIST       | 1,0                    | 1,0                   | 0,0                   |
| <b>TOTAL PERS.SUPERIOR</b>   |                          |              | <b>3,0</b>   |                  | <b>3,0</b>             | <b>3,0</b>            | <b>0,0</b>            |
| 180.0  | ASISTENT MEDICAL         | S            | 1,0          | PRINCIPAL        | 1,0                    | 1,0                   | 0,0                   |
| 181.0  | ASISTENT MEDICAL         | S            | 1,0          | PRINCIPAL        | 1,0                    | 1,0                   | 0,0                   |
| 182.0  | ASISTENT MEDICAL         | S            | 1,0          | PRINCIPAL        | 1,0                    | 0,0                   | 1,0                   |
| 183.0  | ASISTENT MEDICAL         | PL           | 1,0          | PRINCIPAL        | 1,0                    | 1,0                   | 0,0                   |
| 184.0  | ASISTENT MEDICAL         | S            | 1,0          | PRINCIPAL        | 1,0                    | 1,0                   | 0,0                   |
| 185.0  | ASISTENT MEDICAL         | PL           | 1,0          | PRINCIPAL        | 1,0                    | 1,0                   | 0,0                   |
| 186.0  | ASISTENT MEDICAL         | PL           | 1,0          | PRINCIPAL        | 1,0                    | 1,0                   | 0,0                   |
| 187.0  | ASISTENT MEDICAL         | S            | 1,0          | PRINCIPAL        | 1,0                    | 1,0                   | 0,0                   |
| 188.0  | ASISTENT MEDICAL         | S            | 1,0          | GENERALIST       | 1,0                    | 1,0                   | 0,0                   |
| 189.0  | ASISTENT MEDICAL         | S            | 1,0          | PRINCIPAL        | 1,0                    | 1,0                   | 0,0                   |
| 190.0  | ASISTENT MEDICAL         | PL           | 1,0          | PRINCIPAL        | 1,0                    | 1,0                   | 0,0                   |
| 191.0  | ASISTENT MEDICAL         | S            | 1,0          | PRINCIPAL        | 1,0                    | 1,0                   | 0,0                   |
| 192.0  | ASISTENT MEDICAL         | PL           | 1,0          | PRINCIPAL        | 1,0                    | 0,0                   | 1,0                   |
| 193.0  | ASISTENT MEDICAL         | PL           | 1,0          | PRINCIPAL        | 1,0                    | 1,0                   | 0,0                   |
| <b>TOTAL PERS.SAN.MEDIU TREI TURE</b>  |                          |              | <b>14,0</b>  |                  | <b>14,0</b>            | <b>12,0</b>           | <b>2,0</b>            |
| 194.0  | INFIRMIERA               | G            | 1,0          |                  | 1,0                    | 1,0                   | 0,0                   |
| 195.0  | INFIRMIERA               | M            | 1,0          |                  | 1,0                    | 1,0                   | 0,0                   |
| 196.0  | INFIRMIERA               | G            | 1,0          |                  | 1,0                    | 1,0                   | 0,0                   |
| 197.0  | INFIRMIERA               | G            | 1,0          |                  | 1,0                    | 1,0                   | 0,0                   |
| 198.0  | INFIRMIERA               | G            | 1,0          |                  | 1,0                    | 1,0                   | 0,0                   |
| 199.0  | INFIRMIERA               | M            | 1,0          |                  | 1,0                    | 1,0                   | 0,0                   |
| 200.0  | INFIRMIERA               | G            | 1,0          |                  | 1,0                    | 0,0                   | 1,0                   |
| 201.0  | INFIRMIERA               | G            | 1,0          |                  | 1,0                    | 1,0                   | 0,0                   |
| <b>TOTAL INFIRMIERE</b>  |                          |              | <b>8,0</b>   |                  | <b>8,0</b>             | <b>7,0</b>            | <b>1,0</b>            |
| <b>SECTIA CLINICA DE PNEUMOLOGIE ADULTI I : 75 PATURI din care COMP. TBC 30 paturi SI PNEUMOLOGIE CRONICI 4 PATURI</b> |                          |              |              |                  |                        |                       |                       |
| 202.0  | MEDIC SEF SECTIE         | S            | 1,0          | II               | 1,0                    | 0,0                   | 1,0                   |
| 203.0  | MEDIC                    | S            | 1,0          | PRIMAR           | 1,0                    | 1,0                   | 0,0                   |
| 204.0  | MEDIC                    | S            | 1,0          | PRIMAR           | 1,0                    | 1,0                   | 0,0                   |
| 205.0  | MEDIC                    | S            | 1,0          | PRIMAR           | 1,0                    | 1,0                   | 0,0                   |
| 206.0  | MEDIC                    | S            | 1,0          | PRIMAR           | 1,0                    | 1,0                   | 0,0                   |
| 207.0  | MEDIC                    | S            | 1,0          | PRIMAR           | 1,0                    | 1,0                   | 0,0                   |
| 207.5  | MEDIC                    | S            | 0,5          | PRIMAR           | 0,5                    | 0,5                   | 0,0                   |
| <b>TOTAL PERS. SANITAR SUPERIOR</b>  |                          |              | <b>6,5</b>   |                  | <b>7,0</b>             | <b>6,0</b>            | <b>1,0</b>            |
| 208.5  | ASISTENT MEDICAL SEF     | PL           | 1,0          | PRINCIPAL        | 1,0                    | 0,0                   | 1,0                   |
| 209.5  | ASISTENT MEDICAL         | S            | 1,0          | PRINCIPAL        | 1,0                    | 1,0                   | 0,0                   |
| 210.5  | ASISTENT MEDICAL         | S            | 1,0          | PRINCIPAL        | 1,0                    | 1,0                   | 0,0                   |
| 211.5  | ASISTENT MEDICAL         | PL           | 1,0          | PRINCIPAL        | 1,0                    | 1,0                   | 0,0                   |
| 212.5  | ASISTENT MEDICAL         | PL           | 1,0          | PRINCIPAL        | 1,0                    | 1,0                   | 0,0                   |
| 213.5  | ASISTENT MEDICAL         | PL           | 1,0          | PRINCIPAL        | 1,0                    | 0,0                   | 1,0                   |
| 214.5  | KINETOTERAPEUT           | S            | 1,0          | PRINCIPAL        | 1,0                    | 1,0                   | 0,0                   |
| 215.5  | ASISTENT MEDICAL         | PL           | 1,0          | PRINCIPAL        | 1,0                    | 1,0                   | 0,0                   |
| 216.5  | ASISTENT MEDICAL         | S            | 1,0          | PRINCIPAL        | 1,0                    | 1,0                   | 0,0                   |
| 217.5  | ASISTENT MEDICAL         | S            | 1,0          | PRINCIPAL        | 1,0                    | 1,0                   | 0,0                   |
| 218.5  | ASISTENT MEDICAL         | PL           | 1,0          | PRINCIPAL        | 1,0                    | 1,0                   | 0,0                   |
| 219.5  | ASISTENT MEDICAL         | PL           | 1,0          | PRINCIPAL        | 1,0                    | 1,0                   | 0,0                   |
| 220.5  | ASISTENT MEDICAL         | S            | 1,0          | PRINCIPAL        | 1,0                    | 1,0                   | 0,0                   |
| 221.5  | ASISTENT MEDICAL         | PL           | 1,0          | PRINCIPAL        | 1,0                    | 1,0                   | 0,0                   |
| 222.5  | ASISTENT MEDICAL         | S            | 1,0          | PRINCIPAL        | 1,0                    | 1,0                   | 0,0                   |
| 223.5  | ASISTENT MEDICAL         | S            | 1,0          | PRINCIPAL        | 1,0                    | 1,0                   | 0,0                   |
| 224.5  | ASISTENT MEDICAL         | PL           | 1,0          | PRINCIPAL        | 1,0                    | 1,0                   | 0,0                   |
| 225.5  | ASISTENT MEDICAL         | PL           | 1,0          | GENERALIST       | 1,0                    | 0,0                   | 1,0                   |
| <b>TOTAL PERS.SAN.MEDIU TREI TURE</b>  |                          |              | <b>18,0</b>  |                  | <b>18,0</b>            | <b>15,0</b>           | <b>3,0</b>            |
| 226.5  | ASISTENT MEDICAL         | PL           | 1,0          | PRINCIPAL        | 1,0                    | 1,0                   | 0,0                   |
| 227.5  | ASISTENT MEDICAL         | S            | 1,0          | GENERALIST       | 1,0                    | 0,0                   | 1,0                   |
| 228.5  | REGISTRATOR MEDICAL      | M            | 1,0          | DEBUTANT         | 1,0                    | 0,0                   | 1,0                   |
| <b>TOTAL PERSONAL MED.POST FIX</b>   |                          |              | <b>3,0</b>   |                  | <b>3,0</b>             | <b>1,0</b>            | <b>2,0</b>            |
| 229.5  | INFIRMIERA               | G            | 1,0          |                  | 1,0                    | 1,0                   | 0,0                   |
| 230.5  | INFIRMIERA               | G            | 1,0          |                  | 1,0                    | 1,0                   | 0,0                   |
| 231.5  | INFIRMIERA               | G            | 1,0          | DEBUTANT         | 1,0                    | 1,0                   | 0,0                   |
| 232.5  | INFIRMIERA               | G            | 1,0          |                  | 1,0                    | 1,0                   | 0,0                   |
| 233.5  | INFIRMIERA               | G            | 1,0          |                  | 1,0                    | 1,0                   | 0,0                   |
| 234.5  | INFIRMIERA               | G            | 1,0          |                  | 1,0                    | 1,0                   | 0,0                   |
| 235.5  | INFIRMIERA               | G            | 1,0          |                  | 1,0                    | 1,0                   | 0,0                   |

| Nr. Crt.  | FUNCTIA,GRAD SAU TREAPTA | Nivel studii | Cuantiu post | Grad sau Treapta | Numar posturi aprobate | Numar posturi ocupate | Numar posturi vacante |
|---|--------------------------|--------------|--------------|------------------|------------------------|-----------------------|-----------------------|
| 236,5   | INFIRMIERA               | G            | 1,0          |                  | 1,0                    | 1,0                   | 0,0                   |
| 237,5   | INFIRMIERA               | G            | 1,0          |                  | 1,0                    | 1,0                   | 0,0                   |
| 238,5   | INFIRMIERA               | G            | 1,0          |                  | 1,0                    | 0,0                   | 1,0                   |
| 239,5   | INFIRMIERA               | G            | 1,0          |                  | 1,0                    | 0,0                   | 1,0                   |
| <b>TOTAL INFIRMIERE</b>   |                          |              | <b>11,0</b>  |                  | <b>11,0</b>            | <b>9,0</b>            | <b>2,0</b>            |
| <b>COMPARTIMENT ENDOSCOPIE BRONSICA</b>   |                          |              |              |                  |                        |                       |                       |
| Activitatea este asigurata de personalul unitatii   |                          |              |              |                  |                        |                       |                       |
| <b>SECTIA CLINICA DE PNEUMOLOGIE ADULTI II : 75 PATURI din care COMP. TBC 30 paturi SI PNEUMOLOGIE CRONICI 4 PATURI</b> |                          |              |              |                  |                        |                       |                       |
| 240,5   | MEDIC SEF SECTIE         | S            | 1,0          | II               | 1,0                    | 1,0                   | 0,0                   |
| 241,5   | MEDIC                    | S            | 1,0          | PRIMAR           | 1,0                    | 1,0                   | 0,0                   |
| 242,5   | MEDIC                    | S            | 1,0          | PRIMAR           | 1,0                    | 1,0                   | 0,0                   |
| 243,5   | MEDIC                    | S            | 1,0          | PRIMAR           | 1,0                    | 1,0                   | 0,0                   |
| 244,0   | MEDIC                    | S            | 0,5          | PRIMAR           | 0,5                    | 0,5                   | 0,0                   |
| 245,0   | MEDIC                    | S            | 1,0          | PRIMAR           | 1,0                    | 0,0                   | 1,0                   |
| <b>TOTAL PERS.SANIT.SUPERIOR</b>  |                          |              | <b>5,5</b>   |                  | <b>5,5</b>             | <b>4,5</b>            | <b>1,0</b>            |
| 246,0   | ASISTENT MEDICAL SEF     | S            | 1,0          | PRINCIPAL        | 1,0                    | 1,0                   | 0,0                   |
| 247,0   | ASISTENT MEDICAL         | PL           | 1,0          | PRINCIPAL        | 1,0                    | 1,0                   | 0,0                   |
| 248,0   | ASISTENT MEDICAL         | S            | 1,0          | PRINCIPAL        | 1,0                    | 1,0                   | 0,0                   |
| 249,0   | ASISTENT MEDICAL         | PL           | 1,0          | GENERALIST       | 1,0                    | 1,0                   | 0,0                   |
| 250,0   | ASISTENT MEDICAL         | S            | 1,0          | PRINCIPAL        | 1,0                    | 1,0                   | 0,0                   |
| 251,0   | ASISTENT MEDICAL         | S            | 1,0          | PRINCIPAL        | 1,0                    | 1,0                   | 0,0                   |
| 252,0   | ASISTENT MEDICAL         | S            | 1,0          | PRINCIPAL        | 1,0                    | 1,0                   | 0,0                   |
| 253,0   | ASISTENT MEDICAL         | S            | 1,0          | PRINCIPAL        | 1,0                    | 1,0                   | 0,0                   |
| 254,0   | ASISTENT MEDICAL         | S            | 1,0          | PRINCIPAL        | 1,0                    | 1,0                   | 0,0                   |
| 255,0   | ASISTENT MEDICAL         | S            | 1,0          | PRINCIPAL        | 1,0                    | 1,0                   | 0,0                   |
| 256,0   | ASISTENT MEDICAL         | S            | 1,0          | PRINCIPAL        | 1,0                    | 1,0                   | 0,0                   |
| 257,0   | ASISTENT MEDICAL         | S            | 1,0          | PRINCIPAL        | 1,0                    | 1,0                   | 0,0                   |
| 258,0   | ASISTENT MEDICAL         | PL           | 1,0          | PRINCIPAL        | 1,0                    | 1,0                   | 0,0                   |
| 259,0   | ASISTENT MEDICAL         | PL           | 1,0          | GENERALIST       | 1,0                    | 0,0                   | 1,0                   |
| 260,0   | ASISTENT MEDICAL         | PL           | 1,0          | GENERALIST       | 1,0                    | 0,0                   | 1,0                   |
| 261,0   | KINETOTERAPEUT           | S            | 1,0          | DEBUTANT         | 1,0                    | 1,0                   | 0,0                   |
| <b>TOTAL PERS.MED.TREI TURE</b>   |                          |              | <b>16,0</b>  |                  | <b>16,0</b>            | <b>14,0</b>           | <b>2,0</b>            |
| 262,0   | ASISTENT MEDICAL         | S            | 1,0          | PRINCIPAL        | 1,0                    | 1,0                   | 0,0                   |
| 263,0   | ASISTENT MEDICAL         | PL           | 1,0          | PRINCIPAL        | 1,0                    | 1,0                   | 0,0                   |
| 264,0   | REGISTRATOR MEDICAL      | M            | 1,0          | PRINCIPAL        | 1,0                    | 0,0                   | 1,0                   |
| <b>TOTAL PERS.MED.POST FIX</b>  |                          |              | <b>3,0</b>   |                  | <b>3,0</b>             | <b>2,0</b>            | <b>1,0</b>            |
| 265,0   | INFIRMIERA               | G            | 1,0          |                  | 1,0                    | 1,0                   | 0,0                   |
| 266,0   | INFIRMIERA               | M            | 1,0          |                  | 1,0                    | 0,0                   | 1,0                   |
| 267,0   | INFIRMIERA               | M            | 1,0          |                  | 1,0                    | 1,0                   | 0,0                   |
| 268,0   | INFIRMIERA               | G            | 1,0          |                  | 1,0                    | 1,0                   | 0,0                   |
| 269,0   | INFIRMIERA               | G            | 1,0          |                  | 1,0                    | 1,0                   | 0,0                   |
| 270,0   | INFIRMIERA               | G            | 1,0          |                  | 1,0                    | 1,0                   | 0,0                   |
| 271,0   | INFIRMIERA               | M            | 1,0          |                  | 1,0                    | 1,0                   | 0,0                   |
| 272,0   | INFIRMIERA               | G            | 1,0          |                  | 1,0                    | 1,0                   | 0,0                   |
| 273,0   | INFIRMIERA               | M            | 1,0          |                  | 1,0                    | 1,0                   | 0,0                   |
| 274,0   | INFIRMIERA               | G            | 1,0          |                  | 1,0                    | 0,0                   | 1,0                   |
| <b>TOTAL INFIRMIERE</b>   |                          |              | <b>10,0</b>  |                  | <b>10,0</b>            | <b>8,0</b>            | <b>2,0</b>            |
| 275,0   | INGRIJITOARE             | G            | 1,0          |                  | 1,0                    | 1,0                   | 0,0                   |
| 276,0   | INGRIJITOARE             | G            | 1,0          |                  | 1,0                    | 1,0                   | 0,0                   |
| <b>TOTAL INGRIJITOARE</b>   |                          |              | <b>2,0</b>   |                  | <b>2,0</b>             | <b>2,0</b>            | <b>0,0</b>            |
| <b>SECTIA CLINICA DE PNEUMOLOGIE COPII : 45 PATURI din care COMP.TBC 26 paturi</b>                                      |                          |              |              |                  |                        |                       |                       |
| 277,0   | MEDIC SEF SECTIE         | S            | 1,0          | II               | 1,0                    | 0,0                   | 1,0                   |
| 278,0   | MEDIC                    | S            | 1,0          | PRIMAR           | 1,0                    | 1,0                   | 0,0                   |
| 279,0   | MEDIC                    | S            | 1,0          | PRIMAR           | 1,0                    | 1,0                   | 0,0                   |
| 280,0   | MEDIC                    | S            | 1,0          | PRIMAR           | 1,0                    | 1,0                   | 0,0                   |
| 281,0   | MEDIC                    | S            | 1,0          | SPECIALIST       | 1,0                    | 1,0                   | 0,0                   |
| <b>TOTAL MEDICI</b>   |                          |              | <b>5,0</b>   |                  | <b>5,0</b>             | <b>4,0</b>            | <b>1,0</b>            |
| 282,0   | ASISTENT MEDICAL SEF     | S            | 1,0          | PRINCIPAL        | 1,0                    | 1,0                   | 0,0                   |
| 283,0   | ASISTENT MEDICAL         | S            | 1,0          | PRINCIPAL        | 1,0                    | 1,0                   | 0,0                   |
| 284,0   | ASISTENT MEDICAL         | PL           | 1,0          | PRINCIPAL        | 1,0                    | 1,0                   | 0,0                   |
| 285,0   | ASISTENT MEDICAL         | PL           | 1,0          | PRINCIPAL        | 1,0                    | 0,0                   | 1,0                   |
| 286,0   | ASISTENT MEDICAL         | S            | 1,0          | PRINCIPAL        | 1,0                    | 1,0                   | 0,0                   |
| 287,0   | ASISTENT MEDICAL         | S            | 1,0          | PRINCIPAL        | 1,0                    | 0,0                   | 1,0                   |
| 288,0   | ASISTENT MEDICAL         | PL           | 1,0          | PRINCIPAL        | 1,0                    | 1,0                   | 0,0                   |
| 289,0   | ASISTENT MEDICAL         | S            | 1,0          | PRINCIPAL        | 1,0                    | 1,0                   | 0,0                   |
| 290,0   | ASISTENT MEDICAL         | S            | 1,0          | PRINCIPAL        | 1,0                    | 1,0                   | 0,0                   |
| 291,0   | ASISTENT MEDICAL         | S            | 1,0          | PRINCIPAL        | 1,0                    | 1,0                   | 0,0                   |
| 292,0   | ASISTENT MEDICAL         | S            | 1,0          | PRINCIPAL        | 1,0                    | 1,0                   | 0,0                   |
| 293,0   | ASISTENT MEDICAL         | S            | 1,0          | PRINCIPAL        | 1,0                    | 1,0                   | 0,0                   |
| 294,0   | ASISTENT MEDICAL         | S            | 1,0          | PRINCIPAL        | 1,0                    | 1,0                   | 0,0                   |
| <b>TOTAL PERS.MED.TREI TURE</b>   |                          |              | <b>13,0</b>  |                  | <b>13,0</b>            | <b>11,0</b>           | <b>2,0</b>            |
| 295,0   | INFIRMIERA               | G            | 1,0          |                  | 1,0                    | 0,0                   | 1,0                   |
| 296,0   | INFIRMIERA               | M            | 1,0          |                  | 1,0                    | 1,0                   | 0,0                   |

| Nr. Crt.  | FUNCTIA,GRAD SAU TREAPTA     | Nivel studii | Quantum post | Grad sau Treapta | Numar posturi aprobate | Numar posturi ocupate | Numar posturi vacante |
|---|------------------------------|--------------|--------------|------------------|------------------------|-----------------------|-----------------------|
| 297,0   | INFIRMIERA                   | G            | 1,0          |                  | 1,0                    | 1,0                   | 0,0                   |
| 298,0   | INFIRMIERA                   | G            | 1,0          |                  | 1,0                    | 1,0                   | 0,0                   |
| 299,0   | INFIRMIERA                   | G            | 1,0          |                  | 1,0                    | 0,0                   | 1,0                   |
| 300,0   | INFIRMIERA                   | G            | 1,0          |                  | 1,0                    | 1,0                   | 0,0                   |
| 301,0   | INFIRMIERA                   | G            | 1,0          |                  | 1,0                    | 1,0                   | 0,0                   |
| 302,0   | INFIRMIERA                   | G            | 1,0          |                  | 1,0                    | 1,0                   | 0,0                   |
| 303,0   | INFIRMIERA                   | M            | 1,0          |                  | 1,0                    | 1,0                   | 0,0                   |
| 304,0   | INFIRMIERA                   | G            | 1,0          |                  | 1,0                    | 1,0                   | 0,0                   |
| <b>TOTAL INFIRMIERE</b>   |                              |              | <b>10,0</b>  |                  | <b>10,0</b>            | <b>8,0</b>            | <b>2,0</b>            |
| <b>CABINET BOLI INFECTIOASE DISPENSARIZARE HEPATITA STERILIZARE</b> |                              |              |              |                  |                        |                       |                       |
| 305,0   | ASISTENT MEDICAL             | S            | 1,0          | PRINCIPAL        | 1,0                    | 1,0                   | 0,0                   |
| 306,0   | ASISTENT MEDICAL             | PL           | 1,0          | PRINCIPAL        | 1,0                    | 1,0                   | 0,0                   |
| <b>TOTAL PERS.MED.</b>  |                              |              | <b>2,0</b>   |                  | <b>2,0</b>             | <b>2,0</b>            | <b>0,0</b>            |
| <b>CABINET BOLI INFECTIOASE VACCINARE ANTIRABICA</b>                |                              |              |              |                  |                        |                       |                       |
| Activitatea este asigurata de personalul unitatii                   |                              |              |              |                  |                        |                       |                       |
| <b>CABINET O.R.L.</b>   |                              |              |              |                  |                        |                       |                       |
| 307,0   | MEDIC                        | S            | 1,0          | PRIMAR           | 1,0                    | 1,0                   | 0,0                   |
| <b>TOTAL PERSONAL SANITAR SUPERIOR</b>                              |                              |              | <b>1,0</b>   |                  | <b>1,0</b>             | <b>1,0</b>            | <b>0,0</b>            |
| 308,0   | ASISTENT MEDICAL             | S            | 1,0          | PRINCIPAL        | 1,0                    | 1,0                   | 0,0                   |
| <b>TOTAL PERSONAL MEDIU</b>   |                              |              | <b>1,0</b>   |                  | <b>1,0</b>             | <b>1,0</b>            | <b>0,0</b>            |
| <b>CABINET CARDIOLOGIE</b>  |                              |              |              |                  |                        |                       |                       |
| 309,0   | MEDIC                        | S            | 1,0          | PRIMAR           | 1,0                    | 1,0                   | 0,0                   |
| <b>TOTAL PERSONAL SANITAR SUPERIOR</b>                              |                              |              | <b>1,0</b>   |                  | <b>1,0</b>             | <b>1,0</b>            | <b>0,0</b>            |
| 310,0   | ASISTENT MEDICAL             | PL           | 1,0          | PRINCIPAL        | 1,0                    | 1,0                   | 0,0                   |
| <b>TOTAL PERS. MED</b>  |                              |              | <b>1,0</b>   |                  | <b>1,0</b>             | <b>1,0</b>            | <b>0,0</b>            |
| <b>CABINET NEUROLOGIE</b>   |                              |              |              |                  |                        |                       |                       |
| 311,0   | MEDIC                        | S            | 1,0          | SPECIALIST       | 1,0                    | 0,0                   | 1,0                   |
| <b>TOTAL PERSONAL SANITAR SUPERIOR</b>                              |                              |              | <b>1,0</b>   |                  | <b>1,0</b>             | <b>0,0</b>            | <b>1,0</b>            |
| <b>CABINET DIABET ZAHARAT, NUTRITIE SI BOLI METABOLICE</b>          |                              |              |              |                  |                        |                       |                       |
| 312,0   | MEDIC                        | S            | 1,0          | SPECIALIST       | 1,0                    | 0,0                   | 1,0                   |
| <b>TOTAL PERSONAL SANITAR SUPERIOR</b>                              |                              |              | <b>1,0</b>   |                  | <b>1,0</b>             | <b>0,0</b>            | <b>1,0</b>            |
| <b>SPITALIZARE DE ZI HIV/SIDA 25 PATURI</b>                         |                              |              |              |                  |                        |                       |                       |
| 313,0   | MEDIC                        | S            | 1,0          | PRIMAR           | 1,0                    | 1,0                   | 0,0                   |
| 314,0   | MEDIC SEF SECTIE             | S            | 1,0          | II               | 1,0                    | 1,0                   | 0,0                   |
| <b>TOTAL PERSONAL SANITAR SUPERIOR</b>                              |                              |              | <b>2,0</b>   |                  | <b>2,0</b>             | <b>2,0</b>            | <b>0,0</b>            |
| 315,0   | PSIHOLOG                     | S            | 1,0          | PRINCIPAL        | 1,0                    | 1,0                   | 0,0                   |
| 316,0   | ASISTENT MEDICA SOCIAL       | S            | 1,0          | PRINCIPAL        | 1,0                    | 1,0                   | 0,0                   |
| <b>TOTAL ALT PERSONAL SANITAR SUPERIOR</b>                          |                              |              | <b>2,0</b>   |                  | <b>2,0</b>             | <b>2,0</b>            | <b>0,0</b>            |
| 317,0   | ASISTENT MEDICAL SEF         | S            | 1,0          | PRINCIPAL        | 1,0                    | 1,0                   | 0,0                   |
| 318,0   | ASISTENT MEDICAL             | S            | 1,0          | PRINCIPAL        | 1,0                    | 1,0                   | 0,0                   |
| 319,0   | ASISTENT MEDICAL             | S            | 1,0          | PRINCIPAL        | 1,0                    | 1,0                   | 0,0                   |
| 320,0   | ASISTENT MEDICAL             | S            | 1,0          | PRINCIPAL        | 1,0                    | 1,0                   | 0,0                   |
| 321,0   | ASISTENT MEDICAL             | S            | 1,0          | PRINCIPAL        | 1,0                    | 1,0                   | 0,0                   |
| 322,0   | REGISTRATOR MEDICAL          | M            | 1,0          |                  | 1,0                    | 1,0                   | 0,0                   |
| 323,0   | INGRIJITOARE                 | G            | 1,0          |                  | 1,0                    | 1,0                   | 0,0                   |
| <b>TOTAL PERS.SAN MEDIU POST FIX</b>                                |                              |              | <b>7,0</b>   |                  | <b>7,0</b>             | <b>7,0</b>            | <b>0,0</b>            |
| <b>CABINET DERMATOVENEROLOGIE HIV/SIDA</b>                          |                              |              |              |                  |                        |                       |                       |
| 324,0   | MEDIC                        | S            | 1,0          | PRIMAR           | 1,0                    | 1,0                   | 0,0                   |
| <b>TOTAL PERSONAL SANITAR SUPERIOR</b>                              |                              |              | <b>1,0</b>   |                  | <b>1,0</b>             | <b>1,0</b>            | <b>0,0</b>            |
| <b>CABINET STOMATOLOGIE HIV/SIDA</b>                                |                              |              |              |                  |                        |                       |                       |
| 325,0   | MEDIC                        | S            | 1,0          | STOMATOLOG       | 1,0                    | 1,0                   | 0,0                   |
| 326,0   | MEDIC                        | S            | 1,0          | STOMATOLOG       | 1,0                    | 1,0                   | 0,0                   |
| 327,0   | ASISTENT MEDICAL             | S            | 1,0          | GENERALIST       | 1,0                    | 0,0                   | 1,0                   |
| <b>TOTAL PERSONAL SANITAR SUPERIOR</b>                              |                              |              | <b>3,0</b>   |                  | <b>3,0</b>             | <b>2,0</b>            | <b>1,0</b>            |
| <b>DISPENSAR T.B.C.</b>   |                              |              |              |                  |                        |                       |                       |
| 328,0   | MEDIC                        | S            | 1,0          | SPECIALIST       | 1,0                    | 1,0                   | 0,0                   |
| 329,0   | MEDIC                        | S            | 1,0          | PRIMAR           | 1,0                    | 1,0                   | 0,0                   |
| 330,0   | MEDIC                        | S            | 1,0          | PRIMAR           | 1,0                    | 1,0                   | 0,0                   |
| 331,0   | MEDIC                        | S            | 1,0          | PRIMAR           | 1,0                    | 1,0                   | 0,0                   |
| 332,0   | MEDIC                        | S            | 1,0          | PRIMAR           | 1,0                    | 1,0                   | 0,0                   |
| 333,0   | MEDIC coordonator            | S            | 1,0          | PRIMAR           | 1,0                    | 1,0                   | 0,0                   |
| 334,0   | MEDIC                        | S            | 1,0          | PRIMAR           | 1,0                    | 1,0                   | 0,0                   |
| <b>TOTAL PERS.SAN.SUP</b>   |                              |              | <b>7,0</b>   |                  | <b>7,0</b>             | <b>7,0</b>            | <b>0,0</b>            |
| 335,0   | ASISTENT MEDICAL             | S            | 1,0          | PRINCIPAL        | 1,0                    | 1,0                   | 0,0                   |
| 336,0   | ASISTENT MEDICAL             | S            | 1,0          | PRINCIPAL        | 1,0                    | 1,0                   | 0,0                   |
| 337,0   | ASISTENT MEDICAL             | S            | 1,0          | PRINCIPAL        | 1,0                    | 1,0                   | 0,0                   |
| 338,0   | ASISTENT MEDICAL             | PL           | 1,0          | PRINCIPAL        | 1,0                    | 1,0                   | 0,0                   |
| 339,0   | ASISTENT MEDICAL coordonator | S            | 1,0          | PRINCIPAL        | 1,0                    | 1,0                   | 0,0                   |



| Nr. Crt.   | FUNCTIA,GRAD SAU TREAPTA | Nivel studii | Quantum post | Grad sau Treapta | Numar posturi aprobate | Numar posturi ocupate | Numar posturi vacante |
|--|--------------------------|--------------|--------------|------------------|------------------------|-----------------------|-----------------------|
| 340,0  | ASISTENT MEDICAL         | S            | 1,0          | PRINCIPAL        | 1,0                    | 1,0                   | 0,0                   |
| 341,0  | ASISTENT MEDICAL         | S            | 1,0          | PRINCIPAL        | 1,0                    | 1,0                   | 0,0                   |
| 342,0  | ASISTENT MEDICAL         | S            | 1,0          | PRINCIPAL        | 1,0                    | 1,0                   | 0,0                   |
| 343,0  | ASISTENT MEDICAL         | PL           | 1,0          | PRINCIPAL        | 1,0                    | 1,0                   | 0,0                   |
| 344,0  | ASISTENT MEDICAL         | S            | 1,0          | PRINCIPAL        | 1,0                    | 1,0                   | 0,0                   |
| 345,0  | REGISTRATOR MEDICAL      | M            | 1,0          | PRINCIPAL        | 1,0                    | 1,0                   | 0,0                   |
| 346,0  | REGISTRATOR MEDICAL      | M            | 1,0          | PRINCIPAL        | 1,0                    | 1,0                   | 0,0                   |
| 347,0  | ASISTENT MEDICAL         | PL           | 1,0          | PRINCIPAL        | 1,0                    | 1,0                   | 0,0                   |
| 348,0  | INFORMATICIAN            | S            | 1,0          |                  | 1,0                    | 1,0                   | 0,0                   |
| <b>TOTAL PERS.SANIT.MEDIU</b>                      |                          |              | <b>14,0</b>  |                  | <b>14,0</b>            | <b>14,0</b>           | <b>0,0</b>            |
| 349,0  | INGRIJITOARE             | G            | 1,0          |                  | 1,0                    | 1,0                   | 0,0                   |
| 350,0  | INGRIJITOARE             | M            | 1,0          |                  | 1,0                    | 1,0                   | 0,0                   |
| <b>TOTAL INGRIJITOARE</b>                          |                          |              | <b>2,0</b>   |                  | <b>2,0</b>             | <b>2,0</b>            | <b>0,0</b>            |
| <b>CABINET EXPLORARI FUNCTIONALE</b>               |                          |              |              |                  |                        |                       |                       |
| 351,0  | ASISTENT MEDICAL         | PL           | 1,0          | PRINCIPAL        | 1,0                    | 1,0                   | 0,0                   |
| <b>TOTAL EXP.FUNCT</b>                             |                          |              | <b>1,0</b>   |                  | <b>1,0</b>             | <b>1,0</b>            | <b>0,0</b>            |
| <b>LABORATOR ANALIZE MEDICALE</b>                  |                          |              |              |                  |                        |                       |                       |
| 352,0  | MEDIC SEF LABORATOR      | S            | 1,0          | II               | 1,0                    | 1,0                   | 0,0                   |
| 353,0  | MEDIC                    | S            | 1,0          | PRIMAR           | 1,0                    | 1,0                   | 0,0                   |
| 354,0  | MEDIC                    | S            | 1,0          | PRIMAR           | 1,0                    | 1,0                   | 0,0                   |
| 355,0  | MEDIC                    | S            | 1,0          | PRIMAR           | 1,0                    | 1,0                   | 0,0                   |
| 356,0  | MEDIC                    | S            | 1,0          | PRIMAR           | 1,0                    | 1,0                   | 0,0                   |
| 357,0  | MEDIC                    | S            | 1,0          | PRIMAR           | 1,0                    | 1,0                   | 0,0                   |
| 358,0  | MEDIC                    | S            | 1,0          | SPECIALIST       | 1,0                    | 0,0                   | 1,0                   |
| <b>TOTAL PERSONAL SANITAR SUPERIOR</b>             |                          |              | <b>7,0</b>   |                  | <b>7,0</b>             | <b>6,0</b>            | <b>1,0</b>            |
| 359,0  | BIOLOG                   | S            | 1,0          | PRINCIPAL        | 1,0                    | 1,0                   | 0,0                   |
| 360,0  | BIOLOG                   | S            | 1,0          | PRINCIPAL        | 1,0                    | 0,0                   | 1,0                   |
| <b>TOTAL ALT PERS.SUPERIOR</b>                     |                          |              | <b>2,0</b>   |                  | <b>2,0</b>             | <b>1,0</b>            | <b>1,0</b>            |
| 361,0  | ASISTENT LABORATOR       | PL           | 1,0          | PRINCIPAL        | 1,0                    | 0,0                   | 1,0                   |
| 362,0  | ASISTENT LABORATOR       | PL           | 1,0          | PRINCIPAL        | 1,0                    | 1,0                   | 0,0                   |
| 363,0  | ASISTENT LABORATOR       | S            | 1,0          | PRINCIPAL        | 1,0                    | 1,0                   | 0,0                   |
| 364,0  | ASISTENT LABORATOR       | PL           | 1,0          | PRINCIPAL        | 1,0                    | 1,0                   | 0,0                   |
| 365,0  | ASISTENT LABORATOR       | PL           | 1,0          | PRINCIPAL        | 1,0                    | 1,0                   | 0,0                   |
| 366,0  | ASISTENT LABORATOR       | PL           | 1,0          | PRINCIPAL        | 1,0                    | 1,0                   | 0,0                   |
| 367,0  | ASISTENT LABORATOR       | S            | 1,0          | PRINCIPAL        | 1,0                    | 1,0                   | 0,0                   |
| 368,0  | ASISTENT LABORATOR       | S            | 1,0          | PRINCIPAL        | 1,0                    | 1,0                   | 0,0                   |
| 369,0  | ASISTENT LABORATOR       | PL           | 1,0          | PRINCIPAL        | 1,0                    | 1,0                   | 0,0                   |
| 370,0  | ASISTENT LABORATOR SEF   | PL           | 1,0          | PRINCIPAL        | 1,0                    | 1,0                   | 0,0                   |
| 371,0  | ASISTENT LABORATOR       | PL           | 1,0          | PRINCIPAL        | 1,0                    | 1,0                   | 0,0                   |
| 372,0  | ASISTENT LABORATOR       | S            | 1,0          | PRINCIPAL        | 1,0                    | 1,0                   | 0,0                   |
| 373,0  | ASISTENT LABORATOR       | PL           | 1,0          | PRINCIPAL        | 1,0                    | 1,0                   | 0,0                   |
| 374,0  | ASISTENT MEDICAL         | PL           | 1,0          | PRINCIPAL        | 1,0                    | 1,0                   | 0,0                   |
| 375,0  | REGISTRATOR MEDICAL      | M            | 1,0          |                  | 1,0                    | 1,0                   | 0,0                   |
| <b>TOTAL PERS.SANITAR MEDIU</b>                    |                          |              | <b>15,0</b>  |                  | <b>15,0</b>            | <b>14,0</b>           | <b>1,0</b>            |
| 376,0  | INGRIJITOARE             | G            | 1,0          |                  | 1,0                    | 1,0                   | 0,0                   |
| 377,0  | INGRIJITOARE             | G            | 1,0          |                  | 1,0                    | 1,0                   | 0,0                   |
| <b>TOTAL INGRIJITOARE CURATENIE</b>                |                          |              | <b>2,0</b>   |                  | <b>2,0</b>             | <b>2,0</b>            | <b>0,0</b>            |
| <b>COMPARTIMENT BK</b>                             |                          |              |              |                  |                        |                       |                       |
| 378,0  | MEDIC                    | S            | 1,0          | PRIMAR           | 1,0                    | 1,0                   | 0,0                   |
| 379,0  | MEDIC                    | S            | 1,0          | SPECIALIST       | 1,0                    | 1,0                   | 0,0                   |
| 380,0  | MEDIC                    | S            | 1,0          | SPECIALIST       | 1,0                    | 0,0                   | 1,0                   |
| <b>TOTAL PERS.SAN.SUP</b>                          |                          |              | <b>3,0</b>   |                  | <b>3,0</b>             | <b>2,0</b>            | <b>1,0</b>            |
| 381,0  | BIOLOG                   | S            | 1,0          | PRINCIPAL        | 1,0                    | 1,0                   | 0,0                   |
| 382,0  | BIOLOG                   | S            | 1,0          | SPECIALIST       | 1,0                    | 1,0                   | 0,0                   |
| 383,0  | BIOLOG                   | S            | 1,0          |                  | 1,0                    | 1,0                   | 0,0                   |
| <b>TOTAL ALT PERS.SUPERIOR</b>                     |                          |              | <b>3,0</b>   |                  | <b>3,0</b>             | <b>3,0</b>            | <b>0,0</b>            |
| 384,0  | ASISTENT LABORATOR       | PL           | 1,0          | PRINCIPAL        | 1,0                    | 1,0                   | 0,0                   |
| 385,0  | ASISTENT LABORATOR       | S            | 1,0          | PRINCIPAL        | 1,0                    | 1,0                   | 0,0                   |
| <b>TOTAL PERS.SANIT. POST FIX</b>                  |                          |              | <b>2,0</b>   |                  | <b>2,0</b>             | <b>2,0</b>            | <b>0,0</b>            |
| 386,0  | INGRIJITOARE             | G            | 1,0          |                  | 1,0                    | 1,0                   | 0,0                   |
| <b>TOTAL INGRIJITOARE</b>                          |                          |              | <b>1,0</b>   |                  | <b>1,0</b>             | <b>1,0</b>            | <b>0,0</b>            |
| <b>LABORATOR MICROBIOLOGIE MEDICALA</b>            |                          |              |              |                  |                        |                       |                       |
| 387,0  | MEDIC                    | S            | 1,0          | SPECIALIST       | 1,0                    | 0,0                   | 1,0                   |
| <b>TOTAL PERS.SAN.SUP</b>                          |                          |              | <b>1,0</b>   |                  | <b>1,0</b>             | <b>0,0</b>            | <b>1,0</b>            |
| 388,0  | ASISTENT LABORATOR       | PL           | 1,0          | PRINCIPAL        | 1,0                    | 1,0                   | 0,0                   |
| 389,0  | ASISTENT LABORATOR       | PL           | 1,0          | PRINCIPAL        | 1,0                    | 1,0                   | 0,0                   |
| <b>TOTAL PERS.SANIT. POST FIX</b>                  |                          |              | <b>2,0</b>   |                  | <b>2,0</b>             | <b>2,0</b>            | <b>0,0</b>            |
| <b>LABORATOR RADIOLOGIE SI IMAGISTICA MEDICALA</b> |                          |              |              |                  |                        |                       |                       |

| Nr. Crt.  | FUNCTIA,GRAD SAU TREAPTA     | Nivel studii | Quantum post | Grad sau Treapta | Numar posturi aprobate | Numar posturi ocupate | Numar posturi vacante |
|---|------------------------------|--------------|--------------|------------------|------------------------|-----------------------|-----------------------|
| 390,0   | MEDIC SEF LABORATOR          | S            | 1,0          | II               | 1,0                    | 0,0                   | 1,0                   |
| 391,0   | MEDIC                        | S            | 1,0          | PRIMAR           | 1,0                    | 1,0                   | 0,0                   |
| 392,0   | MEDIC                        | S            | 1,0          | SPECIALIST       | 1,0                    | 0,0                   | 1,0                   |
| 392,5   | MEDIC                        | S            | 0,5          | PRIMAR           | 0,5                    | 0,0                   | 0,5                   |
| 393,5   | MEDIC (TBC)                  | S            | 1,0          | PRIMAR           | 1,0                    | 1,0                   | 0,0                   |
| 394,5   | MEDIC (TBC)                  | S            | 1,0          | PRIMAR           | 1,0                    | 1,0                   | 0,0                   |
| <b>TOTAL PERS.SANIT.SUPERIOR</b>                |                              |              | <b>5,5</b>   |                  | <b>5,5</b>             | <b>3,0</b>            | <b>2,5</b>            |
| 395,5   | FIZICIAN                     | S            | 1,0          | FIZICIAN         | 1,0                    | 1,0                   | 0,0                   |
| <b>TOTAL ALT PERS. SANIT. SUPERIOR</b>          |                              |              | <b>1,0</b>   |                  | <b>1,0</b>             | <b>1,0</b>            | <b>0,0</b>            |
| 396,5   | ASISTENT RADIOLOGIE          | PL           | 1,0          | PRINCIPAL        | 1,0                    | 1,0                   | 0,0                   |
| 397,5   | ASISTENT RADIOLOGIE          | PL           | 1,0          | PRINCIPAL        | 1,0                    | 1,0                   | 0,0                   |
| 398,5   | ASISTENT RADIOLOGIE(TBC)     | PL           | 1,0          | PRINCIPAL        | 1,0                    | 1,0                   | 0,0                   |
| 399,5   | ASISTENT RADIOLOGIE(TBC)     | PL           | 1,0          | PRINCIPAL        | 1,0                    | 1,0                   | 0,0                   |
| 400,5   | ASISTENT RADIOLOGIE(TBC)     | PL           | 1,0          | PRINCIPAL        | 1,0                    | 1,0                   | 0,0                   |
| 401,5   | ASISTENT RADIOLOGIE(TBC)     | PL           | 1,0          | PRINCIPAL        | 1,0                    | 1,0                   | 0,0                   |
| 402,5   | ASISTENT RADIOLOGIE(TBC)     | PL           | 1,0          | PRINCIPAL        | 1,0                    | 1,0                   | 0,0                   |
| 403,5   | ASISTENT RADIOLOGIE(TBC)     | PL           | 1,0          | PRINCIPAL        | 1,0                    | 1,0                   | 0,0                   |
| 404,5   | ASISTENT RADIOLOGIE          | S            | 1,0          | DEBUTANT         | 1,0                    | 0,0                   | 1,0                   |
| 405,5   | ASISTENT RADIOLOGIE          | S            | 1,0          | GENERALIST       | 1,0                    | 0,0                   | 1,0                   |
| 406,5   | ASISTENT MEDICAL             | S            | 1,0          | PRINCIPAL        | 1,0                    | 0,0                   | 1,0                   |
| 407,5   | ASISTENT MEDICAL             | S            | 1,0          | GENERALIST       | 1,0                    | 0,0                   | 1,0                   |
| 408,5   | ASISTENT MEDICAL             | PL           | 1,0          | PRINCIPAL        | 1,0                    | 0,0                   | 1,0                   |
| 409,5   | ASISTENT MEDICAL             | PL           | 1,0          | GENERALIST       | 1,0                    | 0,0                   | 1,0                   |
| <b>TOTAL PERS.SANIT.MEDIU</b>                   |                              |              | <b>14,0</b>  |                  | <b>14,0</b>            | <b>8,0</b>            | <b>6,0</b>            |
| 410,5   | INGRIJITOARE                 | G            | 1,0          |                  | 1,0                    | 1,0                   | 0,0                   |
| <b>TOTAL INGRIJITOARE</b>                       |                              |              | <b>1,0</b>   |                  | <b>1,0</b>             | <b>1,0</b>            | <b>0,0</b>            |
| <b>LABORATOR ANATOMIE PATOLOGICA</b>            |                              |              |              |                  |                        |                       |                       |
| 411,5   | MEDIC                        | S            | 1,0          | PRIMAR           | 1,0                    | 1,0                   | 0,0                   |
| 412,0   | MEDIC                        | S            | 0,5          | SPECIALIST       | 0,5                    | 0,5                   | 0,0                   |
| <b>TOTAL PERS.SANIT.SUPERIOR</b>                |                              |              | <b>1,5</b>   |                  | <b>1,5</b>             | <b>1,5</b>            | <b>0,0</b>            |
| 413,0   | ASISTENT LABORATOR           | S            | 1,0          | PRINCIPAL        | 1,0                    | 1,0                   | 0,0                   |
| 414,0   | ASISTENT LABORATOR autopsier | PL           | 1,0          | PRINCIPAL        | 1,0                    | 1,0                   | 0,0                   |
| <b>TOTAL PERS.MED.</b>                          |                              |              | <b>2,0</b>   |                  | <b>2,0</b>             | <b>2,0</b>            | <b>0,0</b>            |
| 415,0   | INGRIJITOARE                 | G            | 1,0          |                  | 1,0                    | 1,0                   | 0,0                   |
| <b>TOTAL INGRIJITOARE</b>                       |                              |              | <b>1,0</b>   |                  | <b>1,0</b>             | <b>1,0</b>            | <b>0,0</b>            |
| <b>MEDIC INTREPRINDERE</b>                      |                              |              |              |                  |                        |                       |                       |
| 416,0   | MEDIC                        | S            | 1,0          | SPECIALIST       | 1,0                    | 1,0                   | 0,0                   |
| <b>TOTAL MED.INTREPRINDERE</b>                  |                              |              | <b>1,0</b>   |                  | <b>1,0</b>             | <b>1,0</b>            | <b>0,0</b>            |
| <b>FARMACIE</b>                                 |                              |              |              |                  |                        |                       |                       |
| 417,0   | FARMACIST SEF                | S            | 1,0          | II               | 1,0                    | 1,0                   | 0,0                   |
| 418,0   | FARMACIST                    | S            | 1,0          |                  | 1,0                    | 0,0                   | 1,0                   |
| 419,0   | FARMACIST                    | S            | 1,0          | PRIMAR           | 1,0                    | 1,0                   | 0,0                   |
| 420,0   | FARMACIST                    | S            | 1,0          | SPECIALIST       | 1,0                    | 1,0                   | 0,0                   |
| <b>TOTAL FARMACISTI</b>                         |                              |              | <b>4,0</b>   |                  | <b>4,0</b>             | <b>3,0</b>            | <b>1,0</b>            |
| 421,0   | ASISTENT FARMACIE            | PL           | 1,0          | PRINCIPAL        | 1,0                    | 1,0                   | 0,0                   |
| 422,0   | ASISTENT FARMACIE            | PL           | 1,0          | PRINCIPAL        | 1,0                    | 1,0                   | 0,0                   |
| 423,0   | ASISTENT FARMACIE            | S            | 1,0          | PRINCIPAL        | 1,0                    | 1,0                   | 0,0                   |
| 424,0   | ASISTENT FARMACIE            | PL           | 1,0          | PRINCIPAL        | 1,0                    | 1,0                   | 0,0                   |
| 425,0   | ASISTENT FARMACIE            | PL           | 1,0          | GENERALIST       | 1,0                    | 1,0                   | 0,0                   |
| <b>TOTAL PERSONAL MEDIU</b>                     |                              |              | <b>5,0</b>   |                  | <b>5,0</b>             | <b>5,0</b>            | <b>0,0</b>            |
| 426,0   | INGRIJITOARE                 | G            | 1,0          |                  | 1,0                    | 0,0                   | 1,0                   |
| <b>TOTAL INGRIJITOARE</b>                       |                              |              | <b>1,0</b>   |                  | <b>1,0</b>             | <b>0,0</b>            | <b>1,0</b>            |
| <b>APARAT FUNCTIONAL</b>                        |                              |              |              |                  |                        |                       |                       |
| <b>SERVICIU RESURSE UMANE</b>                   |                              |              |              |                  |                        |                       |                       |
| 427,0   | SEF SERVICIU                 | S            | 1,0          | II               | 1,0                    | 1,0                   | 0,0                   |
| 428,0   | ECONOMIST                    | S            | 1,0          | IA               | 1,0                    | 1,0                   | 0,0                   |
| 429,0   | ECONOMIST                    | S            | 1,0          | IA               | 1,0                    | 1,0                   | 0,0                   |
| 430,0   | ECONOMIST                    | S            | 1,0          | I                | 1,0                    | 1,0                   | 0,0                   |
| 431,0   | ECONOMIST                    | S            | 1,0          | I                | 1,0                    | 1,0                   | 0,0                   |
| <b>TOTAL SERVICIU RESURSE UMANE</b>             |                              |              | <b>5,0</b>   |                  | <b>5,0</b>             | <b>5,0</b>            | <b>0,0</b>            |
| <b>BIROU INFORMATICA</b>                        |                              |              |              |                  |                        |                       |                       |
| 432,0   | SEF BIROU                    | S            | 1,0          | II               | 1,0                    | 1,0                   | 0,0                   |
| 433,0   | ANALIST PROGRAMATOR          | S            | 1,0          | IA               | 1,0                    | 1,0                   | 0,0                   |
| 434,0   | ANALIST PROGRAMATOR          | S            | 1,0          | IA               | 1,0                    | 1,0                   | 0,0                   |
| <b>TOTAL INFORMATICA</b>                        |                              |              | <b>3,0</b>   |                  | <b>3,0</b>             | <b>3,0</b>            | <b>0,0</b>            |
| <b>SERVICIU STATISTICĂ ŞI EVALUARE MEDICALĂ</b> |                              |              |              |                  |                        |                       |                       |
| 435,0   | SEF SERVICIU                 | S            | 1,0          | II               | 1,0                    | 0,0                   | 1,0                   |
| 436,0   | OPERATOR CONTROLOR DATE      | M            | 1,0          | I                | 1,0                    | 1,0                   | 0,0                   |
| 437,0   | OPERATOR CONTROLOR DATE      | M            | 1,0          | I                | 1,0                    | 1,0                   | 0,0                   |

| Nr. Crt.  | FUNCTIA,GRAD SAU TREAPTA | Nivel studii | Cuquantum post | Grad sau Treapta | Numar posturi aprobate | Numar posturi ocupate | Numar posturi vacante |
|---|--------------------------|--------------|----------------|------------------|------------------------|-----------------------|-----------------------|
| 438,0   | ECONOMIST                | S            | 1,0            | IA               | 1,0                    | 1,0                   | 0,0                   |
| 439,0   | REFERENT                 | M            | 1,0            | IA               | 1,0                    | 1,0                   | 0,0                   |
| 440,0   | ECONOMIST                | S            | 1,0            | IA               | 1,0                    | 1,0                   | 0,0                   |
| 441,0   | INFORMATICIAN            | S            | 1,0            | I                | 1,0                    | 1,0                   | 0,0                   |
| 442,0   | ECONOMIST                | S            | 1,0            | II               | 1,0                    | 1,0                   | 0,0                   |
| 443,0   | ECONOMIST                | S            | 1,0            | IA               | 1,0                    | 1,0                   | 0,0                   |
| <b>TOTAL SERVICIU STATISTICĂ ȘI EVALUARE MEDICALĂ</b>   |                          |              | <b>9,0</b>     |                  | <b>9,0</b>             | <b>8,0</b>            | <b>1,0</b>            |
| <b>SERVICIU MANAGEMENT AL CALITĂȚII SERVICIILOR DE SANATATE</b>                                     |                          |              |                |                  |                        |                       |                       |
| 444,0   | ȘEF SERVICIU             | S            | 1,0            | I                | 1,0                    | 0,0                   | 1,0                   |
| 445,0   | MEDIC                    | S            | 1,0            | SPECIALIST       | 1,0                    | 0,0                   | 1,0                   |
| 446,0   | REFERENT DE SPECIALITATE | S            | 1,0            | I                | 1,0                    | 0,0                   | 1,0                   |
| 447,0   | REFERENT DE SPECIALITATE | S            | 1,0            | IA               | 1,0                    | 1,0                   | 0,0                   |
| 448,0   | REFERENT DE SPECIALITATE | S            | 1,0            | I                | 1,0                    | 1,0                   | 0,0                   |
| 449,0   | REFERENT DE SPECIALITATE | S            | 1,0            | IA               | 1,0                    | 1,0                   | 0,0                   |
| 450,0   | REFERENT DE SPECIALITATE | S            | 1,0            | II               | 1,0                    | 0,0                   | 1,0                   |
| <b>TOTAL SERVICIU MANAGEMENT AL CALITĂȚII SERVICIILOR DE SAN</b>                                    |                          |              | <b>7,0</b>     |                  | <b>7,0</b>             | <b>3,0</b>            | <b>4,0</b>            |
| <b>COMPARTIMENT JURIDIC</b>   |                          |              |                |                  |                        |                       |                       |
| 451,0   | CONSILIER JURIDIC        | S            | 1,0            | IA               | 1,0                    | 1,0                   | 0,0                   |
| <b>TOTAL COMP JURIDIC</b>   |                          |              | <b>1,0</b>     |                  | <b>1,0</b>             | <b>1,0</b>            | <b>0,0</b>            |
| <b>COMPARTIMENT AUDIT PUBLIC INTERN</b>   |                          |              |                |                  |                        |                       |                       |
| 452,0   | AUDITOR                  | S            | 1,0            | IA               | 1,0                    | 1,0                   | 0,0                   |
| <b>TOTAL COMPARTIMENT AUDIT PUBLIC INTERN</b>   |                          |              | <b>1,0</b>     |                  | <b>1,0</b>             | <b>1,0</b>            | <b>0,0</b>            |
| <b>COMPARTIMENT CONFESIONAL</b>   |                          |              |                |                  |                        |                       |                       |
| 453,0   | PREOT                    | S            | 1,0            | I                | 1,0                    | 1,0                   | 0,0                   |
| <b>TOTAL COMPARTIMENT CONFESIONAL</b>   |                          |              | <b>1,0</b>     |                  | <b>1,0</b>             | <b>1,0</b>            | <b>0,0</b>            |
| <b>SERVICIUL FINANCIAR-CONTABILITATE</b>  |                          |              |                |                  |                        |                       |                       |
| 454,0   | ȘEF SERVICIU             | S            | 1,0            | II               | 1,0                    | 0,0                   | 1,0                   |
| 455,0   | ECONOMIST                | S            | 1,0            | IA               | 1,0                    | 1,0                   | 0,0                   |
| 456,0   | ECONOMIST                | S            | 1,0            | IA               | 1,0                    | 1,0                   | 0,0                   |
| 457,0   | ECONOMIST                | S            | 1,0            | IA               | 1,0                    | 1,0                   | 0,0                   |
| 458,0   | ECONOMIST                | S            | 1,0            | IA               | 1,0                    | 1,0                   | 0,0                   |
| <b>TOTAL SERVICIU FINANCIAR CONTABILITATE</b>   |                          |              | <b>5,0</b>     |                  | <b>5,0</b>             | <b>4,0</b>            | <b>1,0</b>            |
| <b>SERVICIUL APROVIZIONARE - TRANSPORTURI</b>   |                          |              |                |                  |                        |                       |                       |
| 459,0   | ȘEF SERVICIU             | S            | 1,0            | II               | 1,0                    | 0,0                   | 1,0                   |
| 460,0   | ȘEF DEPOZIT MAGAZINER    | M            | 1,0            | I                | 1,0                    | 0,0                   | 1,0                   |
| 461,0   | ECONOMIST                | S            | 1,0            | IA               | 1,0                    | 1,0                   | 0,0                   |
| 462,0   | ECONOMIST                | S            | 1,0            | IA               | 1,0                    | 1,0                   | 0,0                   |
| 463,0   | ECONOMIST                | S            | 1,0            | IA               | 1,0                    | 1,0                   | 0,0                   |
| 464,0   | MAGAZINER                | M            | 1,0            |                  | 1,0                    | 1,0                   | 0,0                   |
| 465,0   | MAGAZINER                | M            | 1,0            |                  | 1,0                    | 0,0                   | 1,0                   |
| <b>TOTAL APROVIZIONARE - TRANSPORTURI</b>   |                          |              | <b>7,0</b>     |                  | <b>7,0</b>             | <b>4,0</b>            | <b>3,0</b>            |
| <b>COMPARTIMENT TRANSPORTURI</b>  |                          |              |                |                  |                        |                       |                       |
| 466,0   | SOFER (AUTOSANITARA)     | M            | 1,0            | II               | 1,0                    | 1,0                   | 0,0                   |
| 467,0   | SOFER (AUTOSANITARA)     | M            | 1,0            | II               | 1,0                    | 1,0                   | 0,0                   |
| 468,0   | SOFER                    | M            | 1,0            | II               | 1,0                    | 1,0                   | 0,0                   |
| 469,0   | SOFER (AUTOSANITARA)     | M            | 1,0            | II               | 1,0                    | 1,0                   | 0,0                   |
| 470,0   | SOFER (AUTOSANITARA)     | M            | 1,0            | II               | 1,0                    | 1,0                   | 0,0                   |
| 471,0   | SOFER (AUTOSANITARA)     | M            | 1,0            | II               | 1,0                    | 1,0                   | 0,0                   |
| 472,0   | SOFER (AUTOSANITARA)     | M            | 1,0            | II               | 1,0                    | 1,0                   | 0,0                   |
| <b>TOTAL COMPARTIMENT TRANSPORTURI</b>  |                          |              | <b>7,0</b>     |                  | <b>7,0</b>             | <b>7,0</b>            | <b>0,0</b>            |
| <b>BIROUL ACHIZIȚII PUBLICE, CONTRACTARE</b>  |                          |              |                |                  |                        |                       |                       |
| 473,0   | ȘEF BIROU                | S            | 1,0            | II               | 1,0                    | 1,0                   | 0,0                   |
| 474,0   | ECONOMIST                | S            | 1,0            | IA               | 1,0                    | 1,0                   | 0,0                   |
| 475,0   | CONSILIER JURIDIC        | S            | 1,0            | IA               | 1,0                    | 1,0                   | 0,0                   |
| <b>TOTAL BIROU ACHIZIȚII PUBLICE, CONTRACTARE</b>   |                          |              | <b>3,0</b>     |                  | <b>3,0</b>             | <b>3,0</b>            | <b>0,0</b>            |
| <b>COMPARTIMENT ADMINISTRATIV- SECURITATEA MUNCII, PSI, PROTECTIE CIVILĂ ȘI SITUAȚII DE URGENȚĂ</b> |                          |              |                |                  |                        |                       |                       |
| 476,0   | INGINER                  | S            | 1,0            | IA               | 1,0                    | 1,0                   | 0,0                   |
| 477,0   | CASIER                   | M            | 1,0            | I                | 1,0                    | 1,0                   | 0,0                   |
| <b>TOTALCOMPARTIMENT ADMINISTRATIV- SECURITATEA MUNCII, PSI</b>                                     |                          |              | <b>2,0</b>     |                  | <b>2,0</b>             | <b>2,0</b>            | <b>0,0</b>            |
| <b>SERVICIUL PRIVAT PENTRU SITUAȚII DE URGENTA</b>  |                          |              |                |                  |                        |                       |                       |
| 478,0   | ȘEF SERVICIU             | S            | 1,0            |                  | 1,0                    | 0,0                   | 1,0                   |
| 479,0   | POMPIER SERVANT          | M            | 1,0            | DEBUTANT         | 1,0                    | 0,0                   | 1,0                   |
| 480,0   | POMPIER SERVANT          | M            | 1,0            | DEBUTANT         | 1,0                    | 0,0                   | 1,0                   |
| 481,0   | POMPIER SERVANT          | M            | 1,0            |                  | 1,0                    | 0,0                   | 1,0                   |
| 482,0   | POMPIER SERVANT          | M            | 1,0            |                  | 1,0                    | 0,0                   | 1,0                   |
| 483,0   | POMPIER SERVANT          | M            | 1,0            |                  | 1,0                    | 0,0                   | 1,0                   |
| <b>TOTAL SERVICIUL PRIVAT PENTRU SITUAȚII DE URGENTA</b>  |                          |              | <b>6,0</b>     |                  | <b>6,0</b>             | <b>0,0</b>            | <b>6,0</b>            |
| <b>BLOC LENJERIE SPALATORIE</b>   |                          |              |                |                  |                        |                       |                       |
| 484,0   | SPALATOREASA             | M            | 1,0            | II               | 1,0                    | 1,0                   | 0,0                   |
| 485,0   | SPALATOREASA             | M            | 1,0            | II               | 1,0                    | 1,0                   | 0,0                   |
| 486,0   | SPALATOREASA             | M            | 1,0            | II               | 1,0                    | 1,0                   | 0,0                   |

| Nr. Crt.   | FUNCTIA,GRAD SAU TREAPTA     | Nivel studii | Quantum post | Grad sau Treapta | Numar posturi aprobate | Numar posturi ocupate | Numar posturi vacante |
|--|------------------------------|--------------|--------------|------------------|------------------------|-----------------------|-----------------------|
| 487,0  | SPALATOREASA                 | M            | 1,0          | II               | 1,0                    | 1,0                   | 0,0                   |
| 488,0  | SPALATOREASA                 | M            | 1,0          | II               | 1,0                    | 1,0                   | 0,0                   |
| 489,0  | MUNCITOR (LENJEREASA)        | M            | 1,0          | II               | 1,0                    | 1,0                   | 0,0                   |
| <b>TOTAL BLOC LENJERIE SPALATORIE</b>  |                              |              | <b>6,0</b>   |                  | <b>6,0</b>             | <b>6,0</b>            | <b>0,0</b>            |
| <b>DESERVIRE</b>   |                              |              |              |                  |                        |                       |                       |
| 490,0  | PORTAR - I                   | M            | 1,0          | I                | 1,0                    | 1,0                   | 0,0                   |
| 491,0  | PORTAR - I                   | M            | 1,0          | I                | 1,0                    | 1,0                   | 0,0                   |
| 492,0  | PORTAR - I                   | M            | 1,0          | I                | 1,0                    | 1,0                   | 0,0                   |
| 493,0  | PORTAR I                     | M            | 1,0          | I                | 1,0                    | 1,0                   | 0,0                   |
| 494,0  | PORTAR-I                     | M            | 1,0          | I                | 1,0                    | 1,0                   | 0,0                   |
| 495,0  | PORTAR-I                     | M            | 1,0          | I                | 1,0                    | 0,0                   | 1,0                   |
| 496,0  | PORTAR-I                     | M            | 1,0          | I                | 1,0                    | 1,0                   | 0,0                   |
| 497,0  | ARHIVAR I                    | M            | 1,0          |                  | 1,0                    | 1,0                   | 0,0                   |
| 498,0  | CURIER I                     | M            | 1,0          |                  | 1,0                    | 1,0                   | 0,0                   |
| <b>TOTAL DESERVIRE</b>   |                              |              | <b>9,0</b>   |                  | <b>9,0</b>             | <b>8,0</b>            | <b>1,0</b>            |
| <b>COMPARTIMENT DIETETICA SI BLOC ALIMENTAR</b>  |                              |              |              |                  |                        |                       |                       |
| 499,0  | ASISTENT MEDICAL             | PL           | 1,0          | PRINCIPAL        | 1,0                    | 1,0                   | 0,0                   |
| 500,0  | ASISTENT MEDICAL             | PL           | 1,0          | PRINCIPAL        | 1,0                    | 1,0                   | 0,0                   |
| 501,0  | MUNCITOR (BUCATAR)           | M            | 1,0          | I                | 1,0                    | 1,0                   | 0,0                   |
| 502,0  | MUNCITOR (BUCATAR)           | M            | 1,0          | I                | 1,0                    | 1,0                   | 0,0                   |
| 503,0  | MUNCITOR (BUCATAR)           | M            | 1,0          | I                | 1,0                    | 1,0                   | 0,0                   |
| 504,0  | MUNCITOR (BUCATAR)           | M            | 1,0          | I                | 1,0                    | 1,0                   | 0,0                   |
| 505,0  | MUNCITOR (BUCATAR)           | M            | 1,0          | I                | 1,0                    | 1,0                   | 0,0                   |
| 506,0  | MUNCITOR (BUCATAR)           | M            | 1,0          | I                | 1,0                    | 1,0                   | 0,0                   |
| 507,0  | MUNCITOR (BUCATAR)           | M            | 1,0          | I                | 1,0                    | 1,0                   | 0,0                   |
| 508,0  | MUNCITOR (BUCATAR)           | M            | 1,0          | IV               | 1,0                    | 1,0                   | 0,0                   |
| 509,0  | MUNCITOR (BUCATAR)           | M            | 1,0          | II               | 1,0                    | 0,0                   | 1,0                   |
| 510,0  | MUNCITOR (BUCATAR)           | M            | 1,0          | IV               | 1,0                    | 1,0                   | 0,0                   |
| 511,0  | MUNCITOR (BUCATAR)           | M            | 1,0          | IV               | 1,0                    | 1,0                   | 0,0                   |
| 512,0  | MUNCITOR (BUCATAR)           | M            | 1,0          | IV               | 1,0                    | 1,0                   | 0,0                   |
| <b>TOTAL COMPARTIMENT DIETETICA SI BLOC ALIMENTAR</b>  |                              |              | <b>14,0</b>  |                  | <b>14,0</b>            | <b>13,0</b>           | <b>1,0</b>            |
| <b>COMPARTIMENT LIFTURI - CENTRALA TELEFONICA</b>  |                              |              |              |                  |                        |                       |                       |
| 513,0  | MUNCITOR (LIFTIER)           | M            | 1,0          | I                | 1,0                    | 1,0                   | 0,0                   |
| 514,0  | MUNCITOR (LIFTIER)           | M            | 1,0          | III              | 1,0                    | 1,0                   | 0,0                   |
| 515,0  | MUNCITOR (LIFTIER)           | M            | 1,0          | III              | 1,0                    | 1,0                   | 0,0                   |
| 516,0  | MUNCITOR (LIFTIER)           | M            | 1,0          | I                | 1,0                    | 1,0                   | 0,0                   |
| 517,0  | MUNCITOR (LIFTIER)           | M            | 1,0          | II               | 1,0                    | 1,0                   | 0,0                   |
| <b>TOTAL COMPARTIMENT LIFTURI - CENTRALA TELEFONICA</b>  |                              |              | <b>5,0</b>   |                  | <b>5,0</b>             | <b>5,0</b>            | <b>0,0</b>            |
| <b>ACTIVITATE DE FRIZERIE</b>  |                              |              |              |                  |                        |                       |                       |
| 518,0  | MUNCITOR (FRIZER)            | M            | 1,0          | II               | 1,0                    | 1,0                   | 0,0                   |
| <b>TOTAL FRIZERIE</b>  |                              |              | <b>1,0</b>   |                  | <b>1,0</b>             | <b>1,0</b>            | <b>0,0</b>            |
| <b>APARATURA MEDICALA</b>  |                              |              |              |                  |                        |                       |                       |
| 519,0  | TEHNICIAN APARATURA MEDICALA | PL           | 1,0          | PRINCIPAL        | 1,0                    | 1,0                   | 0,0                   |
| <b>TOTAL APARATURA MEDICALA</b>  |                              |              | <b>1,0</b>   |                  | <b>1,0</b>             | <b>1,0</b>            | <b>0,0</b>            |
| <b>COMPARTIMENT INTRETINERE CLADIRI, OXIGEN ,INSTALATII APA, LUMINA SI INCALZIRE, INTRETINERE SPATII VERZI</b> |                              |              |              |                  |                        |                       |                       |
| 520,0  | MUNCITOR (INSTALATOR)        | M            | 1,0          | IV               | 1,0                    | 1,0                   | 0,0                   |
| 521,0  | MUNCITOR (INSTALATOR)        | M            | 1,0          | I                | 1,0                    | 1,0                   | 0,0                   |
| 522,0  | MUNCITOR (ELECTRICIAN)       | M            | 1,0          | I                | 1,0                    | 1,0                   | 0,0                   |
| 523,0  | MUNCITOR (ELECTRICIAN)       | M            | 1,0          | IV               | 1,0                    | 1,0                   | 0,0                   |
| 524,0  | MUNCITOR (LACATUS MECANIC)   | M            | 1,0          | I                | 1,0                    | 1,0                   | 0,0                   |
| 525,0  | MUNCITOR (LACATUS MECANIC)   | M            | 1,0          | IV               | 1,0                    | 1,0                   | 0,0                   |
| 526,0  | MUNCITOR (LACATUS MECANIC)   | M            | 1,0          | I                | 1,0                    | 1,0                   | 0,0                   |
| 527,0  | MUNCITOR (LACATUS MECANIC)   | M            | 1,0          | II               | 1,0                    | 1,0                   | 0,0                   |
| 528,0  | MUNCITOR (SUDOR)             | M            | 1,0          | II               | 1,0                    | 1,0                   | 0,0                   |
| 529,0  | MUNCITOR (LACATUS MECANIC)   | M            | 1,0          | I                | 1,0                    | 1,0                   | 0,0                   |
| 530,0  | MUNCITOR (LACATUS MECANIC)   | M            | 1,0          | III              | 1,0                    | 1,0                   | 0,0                   |
| 531,0  | MUNCITOR                     | M            | 1,0          | I                | 1,0                    | 1,0                   | 0,0                   |
| 532,0  | MUNCITOR                     | M            | 1,0          | I                | 1,0                    | 0,0                   | 1,0                   |
| <b>TOTAL INTRETINERE CLADIRI, OXIGEN , INSTALATII APA, LUMINA S</b>  |                              |              | <b>13,0</b>  |                  | <b>13,0</b>            | <b>12,0</b>           | <b>1,0</b>            |
| <b>COMPARTIMENT TEHNIC</b>   |                              |              |              |                  |                        |                       |                       |
| 533,0  | INGINER                      | S            | 1,0          | I                | 1,0                    | 1,0                   | 0,0                   |
| 534,0  | INGINER                      | S            | 1,0          | II               | 1,0                    | 1,0                   | 0,0                   |
| <b>TOTAL COMPARTIMENT TEHNIC</b>   |                              |              | <b>2,0</b>   |                  | <b>2,0</b>             | <b>2,0</b>            | <b>0,0</b>            |
| <b>COMP. CLORINARE (EPURARE APE UZATE SI REZIDUALE)</b>  |                              |              |              |                  |                        |                       |                       |
| 535,0  | SUBINGINER CHIMIST           | SSD          | 1,0          | SUBINGINER       | 1,0                    | 1,0                   | 0,0                   |
| <b>TOTAL COMP. CLORINARE (EPURARE APE UZATE SI REZIDUALE)</b>  |                              |              | <b>1,0</b>   |                  | <b>1,0</b>             | <b>1,0</b>            | <b>0,0</b>            |
| <b>EXPLOATARE CENTRALA TERMICA</b>   |                              |              |              |                  |                        |                       |                       |
| 536,0  | MUNCITOR (FOCHIST)           | M            | 1,0          | I                | 1,0                    | 1,0                   | 0,0                   |
| 537,0  | MUNCITOR (FOCHIST)           | M            | 1,0          | IV               | 1,0                    | 1,0                   | 0,0                   |
| 538,0  | MUNCITOR (FOCHIST)           | M            | 1,0          | I                | 1,0                    | 1,0                   | 0,0                   |
| 539,0  | MUNCITOR (FOCHIST)           | M            | 1,0          | IV               | 1,0                    | 1,0                   | 0,0                   |
| 540,0  | MUNCITOR (FOCHIST)           | M            | 1,0          | II               | 1,0                    | 1,0                   | 0,0                   |

| Nr. Crt. | FUNCTIA,GRAD SAU TREAPTA   | Nivel studii | Quantum post | Grad sau Treapta | Numar posturi aprobate | Numar posturi ocupate | Numar posturi vacante |
|----------|--|--------------|--------------|------------------|------------------------|-----------------------|-----------------------|
| 541,0    | MUNCITOR (FOCHIST)   | M            | 1,0          | I                | 1,0                    | 1,0                   | 0,0                   |
|          | <b>TOTAL EXPLOATARE CENTRALA TERMICA</b>   |              | <b>6,0</b>   |                  | <b>6,0</b>             | <b>6,0</b>            | <b>0,0</b>            |
|          | <b>TOTAL GENERAL</b>   |              | <b>541,0</b> |                  | <b>541,0</b>           | <b>447,5</b>          | <b>92,5</b>           |
|          | <b>* IN LABORATORUL DE RADIOLOGIE SI IMAGISTICA MEDICALA SUNT INCLUSI SI MEDICII SI ASISTENTII CARE DESERVESC DISPENSARUL TBC (TBC)*</b> |              |              |                  |                        |                       |                       |

**MUNICIPIUL CRAIOVA**  
**PRIMĂRIA MUNICIPIULUI CRAIOVA**  
**Direcția Juridică, Asistență de Specialitate și Contencios Administrativ**  
**Nr. 148500/ 23.08.2022**

### **RAPORT DE AVIZARE**

Având în vedere:

- Referatul de aprobare nr. 147754/22.08.2022, întocmit de Serviciul Resurse Umane;
- Raportul de specialitate nr. 148414/23.08.2022, întocmit de Serviciul Resurse Umane;
- Legea nr. 95/2006, republicată, privind reforma în domeniul sănătății, cu modificările și completările ulterioare;
- Legea nr. 53/2003, republicată – Codul Muncii, cu modificările și completările ulterioare;
- Ordinul nr. 1312/250/2020 privind organizarea și funcționarea structurii de management al calității serviciilor de sănătate în cadrul unităților sanitare cu paturi și serviciilor de ambulanță, în procesul de implementare a sistemului de management al calității serviciilor de sănătate și siguranței pacientului;
- Ordinul nr. 75/2019 pentru aprobarea Criteriilor de performanță privind constituirea, încadrarea și dotarea serviciilor voluntare și a serviciilor private pentru situații de urgență, cu modificările și completările ulterioare;
- Ordinul nr. 1224/2010 privind aprobarea normativelor de personal pentru asistența medicală spitalicească, precum și pentru modificarea și completarea Ordinului ministrului sănătății publice nr. 1.778/2006 privind aprobarea normativelor de personal, cu modificările și completările ulterioare;
- Ordinul nr. 1608/2022 privind modificarea și completarea Ordinului ministrului sănătății publice nr. 1.301/2007 pentru aprobarea Normelor privind funcționarea laboratoarelor de analize medicale;
- Adresa nr. 12009/23.08.2022, înregistrată la autoritatea locală sub nr. 142/23.08.2022 a Spitalului Clinic de Boli Infecțioase și Pneumoftiziologie „Victor Babeș” Craiova;
- Avizul Ministerului Sănătății nr. AR 14906/DPSS 5301/22.08.2022;
- O.U.G. nr. 57/2019 privind Codul Administrativ;
- Legea nr. 514/2003 privind organizarea și exercitarea profesiei de consilier juridic

### **AVIZAM FAVORABIL**

Propunerea privind modificarea Hotărârii Consiliului Local al municipiului Craiova nr. 253/2022, referitoare la aprobarea organigramei și statului de funcții ale Spitalului Clinic de Boli Infecțioase și Pneumoftiziologie „Victor Babeș” Craiova.

**DIRECTOR EXECUTIV,**  
**Ovidiu Mischianu**

Îmi asum responsabilitatea privind realitatea și legalitatea în solidar cu întocmitorul înscrisului  
Data 23.08.2022

Semnatura



**ÎNTOCMIT,**  
**consilier juridic Ana-Maria Mihaiu**

Îmi asum responsabilitatea pentru fundamentarea, realitatea și legalitatea întocmirii acestui act oficial  
Data 23.08.2022

Semnatura

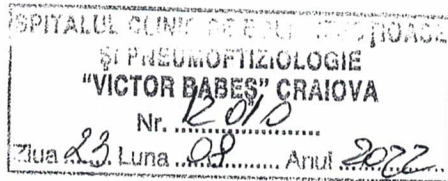




MINISTERUL SĂNĂTĂȚII  
DIRECȚIA PERSONAL ȘI STRUCTURI SANITARE  
Biroul Structuri Sanitare

Intr. Cristian Popișteanu nr. 1-3  
sector 1, București  
[www.ms.ro](http://www.ms.ro)

Tel.: +4 021 3072 627  
Fax: +4 021 3072 626  
Email: dmss@ms.ro



Nr. AR 14906/DPSS 5301/22.08.2022

**CĂTRE,**

Spitalul Clinic de Boli Infecțioase și Pneumoftiziologie „Victor Babeș” Craiova  
Craiova, Str. Calea București nr.126, jud. Dolj

Având în vedere:

- solicitarea Spitalul Clinic de Boli Infecțioase și Pneumoftiziologie „Victor Babeș” Craiova, prin adresa nr.11983/2022 avizată de Primăria Municipiului Craiova, înregistrată la Ministerul Sănătății cu nr. AR 14831/ DPSS 5301,
- concluziile menționate în Notificarea pentru conformarea proiectului la normele de igienă și sănătate publică nr.15568/2022 a DSP DSP Dolj,
- în temeiul prevederilor art.172 alin.(7) din Legea nr.95/2006, republicată, cu modificările și completările ulterioare și ale HG nr.144/2010, privind organizarea și funcționarea Ministerului Sănătății, cu modificările și completările ulterioare
- prevederile art.3 alin.(2) din OMS nr.1301/2007, cu modificările și completările ulterioare,

vă comunicăm avizul Ministerului Sănătății pentru completarea structurii Spitalului Clinic de Boli Infecțioase și Pneumoftiziologie „Victor Babeș” Craiova, după cum urmează:

” Laborator de microbiologie medicală ”

Cu stimă,

**DIRECTOR**

Alina Gabriela CARABULEA



**SPITALUL CLINIC DE BOLI  
INFECȚIOASE ȘI  
PNEUMOFTIZIOLOGIE  
„VICTOR BABEȘ“ CRAIOVA**



Adresa: Bvd. Calea București , nr.126  
Tel: +40251-542.333, Fax: +40251-543157  
Web: [www.vbabes-cv.ro](http://www.vbabes-cv.ro), E-mail: [spital@vbabes-cv.ro](mailto:spital@vbabes-cv.ro)

**CATRE,**

**Consiliul Local al Municipiului Craiova**

Avand in vedere Avizul Ministerului Sanatatii nr..... de modificare a structurii Spitalului Clinic de Boli Infecțioase si Pneumoftiziologie „Victor Babes”Craiova, pentru infiintarea LABORATORULUI DE MICROBIOLOGIE MEDICALA , aviz transmis astazi 23.08.2022, propunem urmatoarele modificari pentru completarea documentatiei depuse de unitatea noastra sub numarul 138/22.08.2022, astfel :

**MODIFICARI DE STRUCTURA :**

Se infiinteaza Laboratorul de Microbiologie Medicala ca structura medicala distincta conform prevederilor pct 9 din OMS 1608/2022, de modificare a art.3 pct 2 a OMS 1301/2007, deoarece unitatea noastra, prin profilul ei necesita existenta unui laborator de microbiologie medicala, absolut necesar unei structuri medicale cu peste 400 de paturi .

**MODIFICARI DE PERSONAL :**

- Se transforma postul de As.Med.( vacant ) de la Clinica PNF I (poz.219.5stat vechi), in post de Medic Specialist si se creaza un nou post in cadrul Laboratorului de Microbiologie Medicala (poz.387 stat functii ) post absolut necesar pentru buna desfasurare a actului medical la nivelul laboratorului unitatii( conform solicitarii nr.10003/14.07.2022 Medicului Sef al Laboratorului de analize medicale - atasata la prezenta ) ;
- Salariatii de la poz.364 si 365 stat functii vechi , din cadrul Laboratorului de analize Medicale se muta cu tot cu post la Laboratorul de Microbiologie medicala ( poz.388 si respectiv 389 stat nou ) ;

**Diverse :**

- S-a dat o noua numerotare statului de functii ;

Va atasam la prezenta documentatia finala modificata prin completarile mai sus mentionate .

**Manager**

Sef Lucrari Dr.Turcu Andreea Adina

**Director Medical**

Dr.Nicolosu Dragos

**Director Financiar-Contabil**

Ec.Vasiluta Cosmin

**Director de Ingrijiri Medicale**

As.Med.Pr.Poenaru Luminita

**Sef Serviciu Resurse Umane**

Cj Buliteanu Veronica





**SPITALUL CLINIC DE BOLI  
INFECȚIOASE ȘI  
PNEUMOFTIZIOLOGIE  
„VICTOR BABEȘ“ CRAIOVA**



Adresa: Bvd. Calea București , nr.126

Tel: +40251-542.333, Fax: +40251-543157

Web: [www.vbabes-cv.ro](http://www.vbabes-cv.ro), E-mail: [spital@vbabes-cv.ro](mailto:spital@vbabes-cv.ro)

**Fundamentare Stat Functii 2022**

Normativul Spitalului Clinic de Boli Infecțioase și Pneumoftiziologie Victor Babeș Craiova este stabilit , la un număr mediu de posturi, în conformitate cu prevederile art. 185 din Legea 95/2006 privind reforma în domeniul sănătății și a normativelor de personal în vigoare (Ordin MS nr. 1224/2010).

Astfel pe parte medicală , conform Anexei nr.1 din normativul mai sus menționat - asistența la paturi s-a calculat la medici la un număr de 10 paturi (exemplu 75 paturi : 10 = 7,5 medici), la asistente la 10 paturi (exemplu – 75 paturi : 10 X 3 = 22 asistente la 3 ture), iar la infirmiere la 12.5 paturi ( exemplu 75 paturi : 12.5 X 3 = 18 infirmiere la 3 ture .La posturile fixe s-a calculat pentru asistente astfel : 15.5 paturi (exemplu 75 paturi : 15,5 X 3 = 14 ).

Conform normativului, unitatea are un normat de 697 posturi și propunere spre aprobare, pentru anul 2022 de 541 de posturi.

Fata de aprobatul de 541 posturi, în stat se regăsesc, în plus și cei 178 rezidenți alocați unității noastre de către Ministerul Sănătății pe locuri de rezidențiat, care nu afectează posturile unității fiind plătiți de la Bugetul de stat-Capitolul transferuri –rezidenți.

La Tesa normarea s-a calculat conform Anexei nr.9 punctul 3 unități între 301 și 500 de paturi, lunadu-se în calcul normarea la 410 paturi spitalizare continuă.

Se vor efectua următoarele modificări :

**MODIFICARI DE PERSONAL :**

- 1 post vacant de medic primar pneumolog, în cadrul Clinicii Pneumologie Adulți II ( poz.246 stat funcții ) prin transformarea postului de asistent medical principal (S) de la poz.251 stat vechi, post pe care va funcționa medic primar pneumolog care a ocupat funcția de Medic Șef Secție ;
- Salariatul de la poz.245 stat vechi, se mută cu tot cu post de la Clinica Pneumologie Adulți II la Clinica Pneumologie Adulți I ( poz.207.5 Stat funcții )
- Salariatul de la poz.208.5 stat vechi, se mută cu tot cu post de la Clinica Pneumologie Adulți I la Clinica Pneumologie Adulți II ( poz.245 Stat )
- Se transformă postul de Infirmieră ( vacant ) de la Clinica BI Ad.II (poz.119 stat vechi), în post de Portar și se creează un nou post în cadrul Comp.Deservire (poz.495 stat funcții ) ;
- Se transformă postul de As.Med.( vacant ) de la Clinica PNF II (poz.253 stat vechi), în post de Medic Specialist și se creează un nou post în cadrul Laboratorului de Analize Medicale – Compartiment BK (poz.383 stat funcții ) post absolut necesar pentru bună desfășurare a actului medical la nivelul laboratorului unității( conform solicitării nr.10647/28.07.2022 Medicului Coordonator al Programului de Prevenire, Supraveghere și Control Al Tuberculozei al Județului Dolj- atasată la prezenta ) ;
- Se transformă postul vacant prin pensionare de Farmacist primar de la Farmacie (poz.419 stat vechi), în post de Farmacist (poz.418 stat funcții ) ;

- Salariatul de la poz.494 stat functii vechi , din cadrul Comp.Deservire se muta cu tot cu post la Comp.Intret.cladiri, oxigen, instalatii apa, lumina si incalizre, intretinere spatii verzi ( poz.529 stat functii ) ;
- Salariatul de la poz.513 stat functii vechi , din cadrul Comp.Lifturi se muta cu tot cu post la Comp.Intret.cladiri, oxigen, instalatii apa, lumina si incalizre, intretinere spatii verzi ( poz.530 stat nou ) ;
- Salariatul de la poz.517 stat functii vechi , din cadrul Comp.Lifturi se muta cu tot cu post la Comp.Intret.cladiri, oxigen, instalatii apa, lumina si incalizre, intretinere spatii verzi ( poz.525 stat nou ) ;
- Salariatul de la poz.532 stat functii vechi , din cadrul Comp.Intret.cladiri, oxigen, instalatii apa, lumina si incalizre, intretinere spatii verzi se muta cu tot cu post la Comp.Lifturi ( poz.516 stat nou ) ;
- Salariatul de la poz.529 stat functii vechi , din cadrul Comp.Intret.cladiri, oxigen, instalatii apa, lumina si incalizre, intretinere spatii verzi se muta cu tot cu post la Comp.Deservire ( poz.496 stat nou ) ;
- Se transforma postul de As.Med.( vacant ) de la Clinica PNF I (poz.219.5stat vechi), in post de Medic Specialist si se creaza un nou post in cadrul Laboratorului de Microbiologie Medicala (poz.387 stat functii ) post absolut necesar pentru buna desfasurare a actului medical la nivelul laboratorului unitatii( conform solicitarii nr.10003/14.07.2022 Medicului Sef al Laboratorului de analize medicale - atasata la prezenta ) ;
- Salariatii de la poz.364 si 365 stat functii vechi , din cadrul Laboratorului de analize Medicale se muta cu tot cu post la Laboratorul de Microbiologie medicala ( poz.388 si respectiv 389 stat nou ) ;
- **MODIFICARI DE STRUCTURA :**

Se infiinteaza Laboratorul de Microbiologie Medicala ca structura medicala distincta conform prevederilor pct 9 din OMS 1608/2022, de modificare a art.3 pct 2 a OMS 1301/2007, deoarece unitatea noastra, prin profilul ei necesita existenta unui laborator de microbiologie medicala, absolut necesar unei structuri medicale cu peste 400 de paturi .

**Diverse :**

- S-au incris in stat promovarile din debutant, cat si promovarile de grad profesional a personalului medical, care au avut loc pana la data depunerii statului ;
- S-au modificat in stat si pozitiile in care pana la data depunerii statului de functii, salariatii s-au pensionat, au decedat sau au plecat din unitate cat si personalul transferat in cadrul unitatii ;
- S-a dat o noua numerotare statului de functii ;

**Manager**  
Sef Lucrari Dr.Turcu Andreea Adina

**Director Medical**  
Dr.Nicolosu Dragos

**Director Financiar-Contabil**  
Ec.Vasiluta Cosmin

**Director de Ingrijiri Medicale**  
As.Med.Pr.Poenaru Luminita

**Sef Serviciu Resurse Umane**  
Cj Buliteanu Veronica